



The Perle CS9000 Console Server offers network managers a reliable and cost-effective solution to remotely manage and troubleshoot distributed server farms/racks and network appliances (routers, RAS etc). By connecting the console management ports on these network devices to the serial ports on the Perle CS9000 Console Server they can be managed in band or out of band via a corporate LAN/WAN or dial-in connection.

A cost effective solution for backup management of network devices

Features and Benefits:

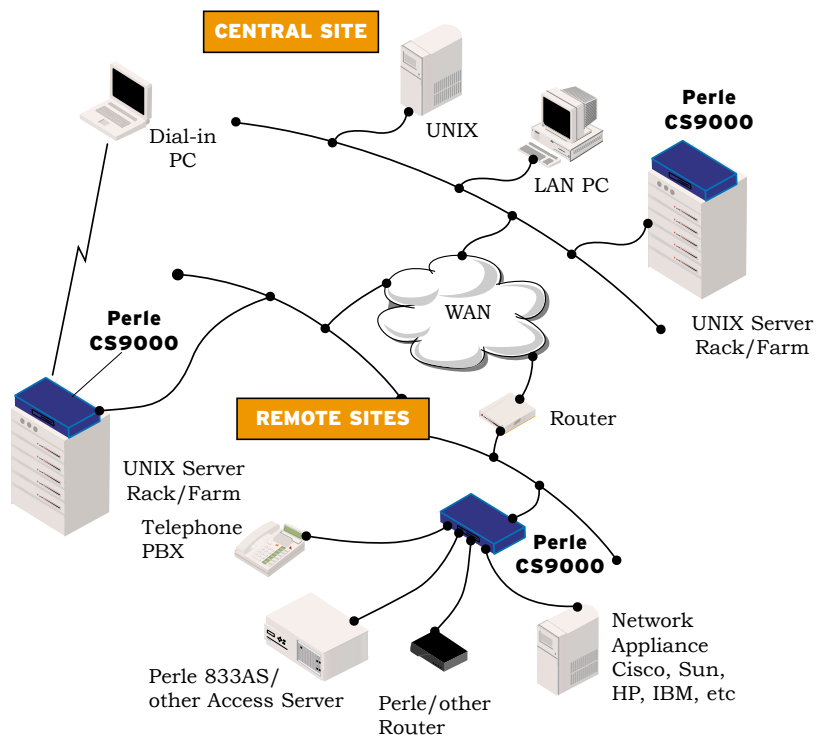
- Extremely easy to configure reducing setup time
- In and Out of Band management allowing LAN/WAN or dial in access to network devices
- No break signal issued on power cycle to prevent costly Sun Server reboots
- Local or remote configuration for ease of management
- Local or remote upgrades protect investment and simplify management
- Integrated security features provide secure access to critical network devices
- 1U Rackmount keeps use of costly space to a minimum
- Standard network management integrates seamlessly with existing configuration commands
- Lifetime warranty for security and peace of mind

Application

- Server Farm Management
- Network Appliance Management including:
 - Routers
 - Remote Access Servers
 - Firewalls
 - PBX's
 - Switches

Since an administrator can connect anytime from anywhere, they save significant amounts of time and reduce overall costs by keeping system disruption to a minimum.

The Perle CS9000 provides a comprehensive suite of security features that allow organisations to implement robust security planning and prevent unauthorized access. These include SLIP and PPP protocols (incorporating PAP and CHAP) for Remote User dial-in plus support for RADIUS server environments.



A wide array of software tools allow the Perle CS9000 to be configured, managed and flash upgraded either locally or remotely over the network or via the Internet.

Command line and menu interfaces are also included, as is a separate local management port. In addition, industry standard control and management facilities are supported – SNMP, BOOTP, DHCP and DNS.

Class Leading Service and Support

The Perle CS9000 is backed by the best service and support in the industry including Perle's unique lifetime warranty.

Technical Specifications

Connectivity

Serial Ports

- CS9016 model: 16 RS232 serial ports
- CS9024 model: 24 RS232 serial ports

Backbone LAN Attachment

- 10BaseT RJ45 + AUI

Management Port

- RS232 DB25 Female

Physical

Architecture

- 32 bit processor
- Custom ASICs
- Up to 230 Kbps throughput per port

Serial Port Signals/Protection

- TXD, RXD, RTS, CTS, DTR, DSR, DCD and GND
- All serial ports are ESD protected to 15kV through air

LED Indicators

- Main – Power and Network
- Serial – Send and Receive integrated into each RJ45 connector

Power, Dimensions and Weight

- Internal, auto-ranging, 110-240V
- 1.77" x 9.01" x 16.93" (H x L x W) (without ears)
- 4.4 lbs

Environmental

- Operating Temperature: 32°F to 110°F
- Storage Temperature: -22°F to 158°F
- Operating Humidity: 5 to 95% RH (non-condensing)
- Storage Humidity: 5 to 95% RH (non-condensing)

Approvals

- EMC: EN55022 Class A, FCCA
- Safety: CSA 22.2.950, NRTL/C, IEC 950, EN60950
- CE Approval

Software

Administration

Local or Remote management using:

- Command Line
- Menu Command Interfaces
- JETset Web-based configuration utility
- Multi-Language Support: English, French, German, Italian, Spanish, Mandarin Chinese, and ability to load a custom language file

Network Protocols

- TCP/IP, UDP, ICMP, SNMP, ARP, Proxy ARP, RARP, DHCP, BOOTP, RIP and Static Routing, PPP, SLIP, CSLIP, TELNET, RLOGIN, CLEAR TCP HTTP, WINS, DNS

Remote Access and Security

- Support for up to 20 different modem types initialisation strings
- RADIUS authentication (RFC2058)
- RADIUS accounting (RFC2059)
- PAP

- CHAP
- Fixed and Roaming Callback

Client Software Requirement

- Administrator's client system must be capable of Telnet over a TCP/IP network

Upgrades

FLASH update via:

- Network using BOOTP, DHCP or TFTP
- Local management port using Jetload

Warranty

- Limited lifetime warranty

Maintenance Agreement

- To ensure rapid system recovery, maintenance agreements are available for Perle hardware. These include on-site service in many areas, or express part replacement. Visit Perle's Web site for coverage details.
www.perle.com/support/service_sales.html

Free Software

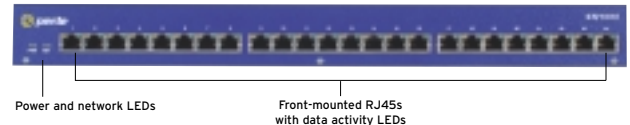
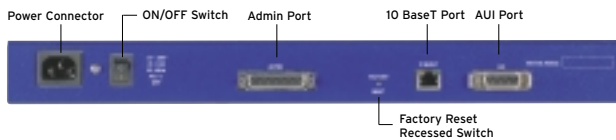
- Perle provides free software upgrades to registered users via Perle's Web site.
www.perle.com/downloads

Visit the Perle Web site for up-to-date product support and technical information.

www.perle.com/products

Ordering Information

For Product Codes and Model Descriptions, please visit Perle's Web site at www.perle.com/products and select Product Family Console Server



Perle Authorized Distributor



Perle Systems Inc.
565 Marriott Drive, Suite 850
Nashville, TN 37214
www.perle.com

Contact Perle
Tel. 800 GO PERLE
Fax 615 872 0771
info@perle.com

Perle products are constantly reviewed and updated to meet customers' needs, as such specifications and capabilities are subject to change without notice. We endeavor to keep product descriptions as current as possible; for the latest up-to-date information, please visit our web site at www.perle.com. Perle is a registered trademark of Perle Systems. All other product names are trademarks of their respective holders. Copyright © Perle.