



The Perle 833IS Access Server is a complete, integrated and scalable high-speed access server for remote dial-in users to access ISP and enterprise networks. It provides enterprise-level remote access functionality usually found in high density remote access products at an entry-level price. And with Cisco IOS™ compatible configuration, the Perle 833IS is immediately productive with its low learning curve for Cisco-qualified network administrators.

Fully Integrated High Speed Remote Access Solution

Features and Benefits:

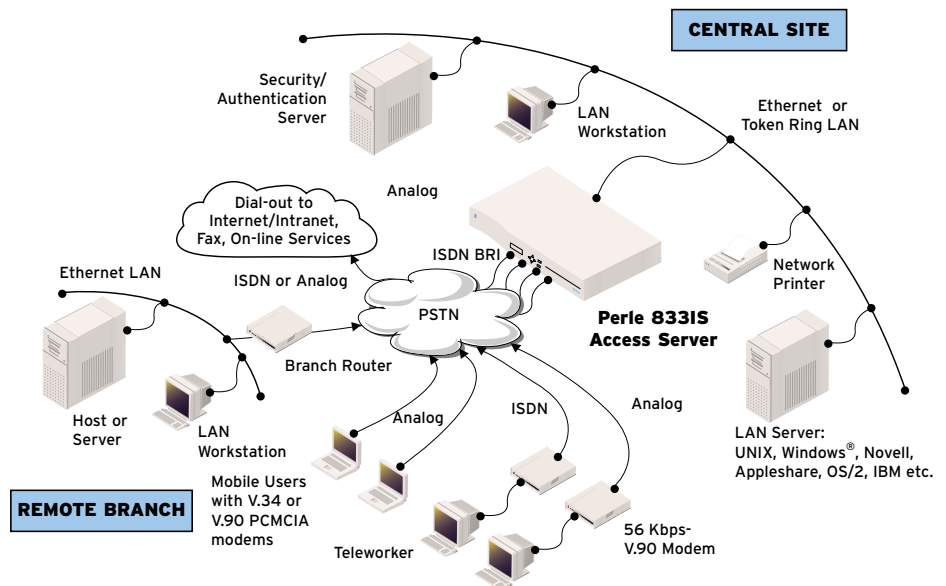
- Cisco IOS™ style command line configuration to fit seamlessly into Cisco-based networks
- Integrated 56 Kbps-V.90, V.34 modem and ISDN technology provides the most cost-effective networking for your users
- Support for analog and ISDN calls on the same BRI line simplifies access for both types of users
- Scalable support for 8 to 16 concurrent users allows users to expand with the growth of their remote dial-in population
- Multi-level security features including NT Domain Server Authentication ensure only authorized users have access to corporate resources
- Windows-based GUI Manager simplifies network control
- Full function dial-out modem pooling enables LAN-based users to send faxes* or dial out to the Internet or other on-line services
- Convenient front panel display and keypad for easy configuration
- Lifetime warranty for security and peace of mind

Applications

- Central site dial-in remote access with ISDN BRI service
- Departmental/workgroup dial-in remote access
- Dial-out modem pooling
- LAN-to-LAN routing

Remote Connectivity

The Perle 833IS supports 8 to 16 concurrent dial-in, dial-out or LAN to LAN users across 4 or 8 ISDN BRI (digital or analog) connections. Expansion of the Perle 833IS is achieved quickly, easily and cost-effectively through the addition of a WAN interface card. These cards are available with or without integrated analog/digital modems, allowing Network Managers to efficiently match the requirements of their dial-in user population. By allowing both ISDN and analog calls to be made across the same BRI line with one unique telephone number, the Perle 833IS offers a simplified approach to deploying both ISDN and analog modem technology.



Secure Access

Security is a key issue when supporting remote users. To meet those needs, the Perle 833IS has multi-level security and management features and supports major security standards including PAP, CHAP, RADIUS, NetWare Bindery, Axent DSS, SecurID-ACE/Server and Windows NT Domain Server.

Dial-out, Faxing-out

The Perle 833IS unique dial-out capabilities allow LAN-based users to easily and efficiently send faxes* or dial out to the Internet or other on-line services using the server's integrated modems. Perle 833IS servers can also be grouped into a single dial-out pool, simplifying the set-up and installation for dial-out users.

Class Leading Service and Support

The Perle 833IS is backed by the best service and support in the industry including Perle's unique lifetime warranty.

Technical Specifications

Connectivity

LAN Interface

- 10/100 Mbps Fast Ethernet
- 4/16 Mbps Token Ring

WAN Interface

- 4 or 8 ISDN BRI (U or S/T) with or without V.90 modems

Management Port

- RS232 DB25 Female

Physical Architecture

System Card

- 50 MHz Power PC RISC
- 16MB RAM
- 4MB FLASH
- 4 ISDN BRI

Expansion Card

- 4 ISDN BRI

Modem

- Data modulations supported Dial-in: V.90, K56Flex, V.34, V.32, V.23, V.22, V.21
- Dial-out: V.34, V.32, V.23, V.22, V.21
- Modem Protocols: V.42, MNP 2-5, MNP10, T.30 Fax, Facsimile Class 2

Front and Rear Panel Indicators

- Power LED
- System operational LED
- LAN connect LED
- 2 x 16 LCD panel

Power, Dimensions and Weight

- Operating Voltage
100-240 VAC (auto-sensing), 50-60 Hz,
- 2.6" x 6.9" x 12.2"
- 12 lbs

Environmental

- Operating Temperature: 32°F-104°F
- BTU Output: 100 BTU/hour maximum
- Humidity 0-95% non-condensing

Approvals

- USA, Canada
- European Union, China, Japan, Australia and Hong Kong

Emissions

- FCC Part 15, Class A, Issue2,
- EN 55022
- VCCI Class 1

Telephony

- FCC Part 68, IC CS03
- European Harmonised Standard CTR3
- TS 031

Networking

Administration

- Manager works from remote or local PCs
- CISCO IOS™ Style Command Line Configuration
- Management Software:
Windows 2000, NT, Me, 98, 95
- SNMP support over TCP/IP including MIB II and other extensions
- IP Address Management through DHCP Server, IP Address pool, dial-in client, user record, or port record
- SYS LOG, PPP Log

Network Protocols

- PPP, ML PPP, ARAP 1 or ARAP 2 protocol
- TCP/IP, IPX
- NetBEUI
- LLC (802.2)
- DHCP BOOTP
- SNMP
- EuroISDN ETSI Net3

LAN-to-LAN

- IP, IPX, PPP, ML PPP, RIP v1.0, 2.0, IPCP, IPXCP, Static routing
- Dial on demand, ISDN Spoofing

Security

- Windows NT Domain Server Authentication
- PAP, CHAP
- Call-back: Windows 2000, NT, Me, 98, 95
- Packet Filtering Firewall: IPX or TCP/IP
- RADIUS
- Internal User List
- NetWare Bindery Support
- Share internal user lists between Perle 833IS's
- Axent DSS
- SecurID-ACE/Server
- Password aging

Warranty

- Limited lifetime warranty

Maintenance Agreement

- To ensure rapid system recovery, maintenance agreements are available for Perle hardware. These include on-site service in many areas, or express part replacement. Visit Perle's Web site for coverage details.
www.perle.com/support/service_sales.html

Free Software

- Perle provides free software upgrades to registered users via Perle's Web site.
www.perle.com/downloads

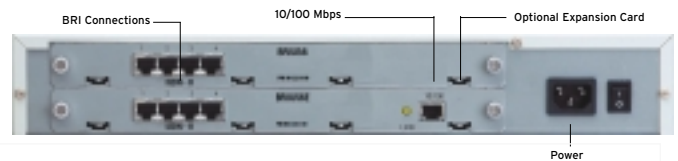
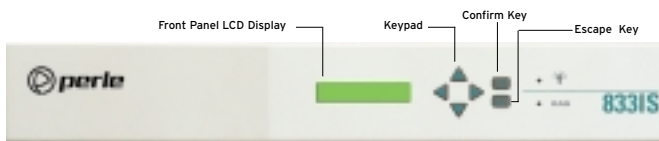
Visit the Perle Web site for up-to-date product support and technical information.
www.perle.com/products

* In conjunction with third party fax software packages

Ordering Information

For Product Codes and Model Descriptions, please visit Perle's Web site at www.perle.com/products and select Product Family Access Servers

Perle 833IS - 16 channel Ethernet version



Perle Authorized Distributor



Perle Systems Inc.
565 Marriott Drive, Suite 850
Nashville, TN 37214
www.perle.com

Contact Perle
Tel. 800 GO PERLE
Fax 615 872 0771
info@perle.com

Perle products are constantly reviewed and updated to meet customers' needs, as such specifications and capabilities are subject to change without notice. We endeavor to keep product descriptions as current as possible; for the latest up-to-date information, please visit our web site at www.perle.com. Perle is a registered trademark of Perle Systems. All other product names are trademarks of their respective holders. Copyright©Perle.