



The Perle 833IS Access Server is a complete, integrated and scaleable high-speed access server for remote dial-in users to access ISP and enterprise networks. It provides enterprise-level remote access functionality usually found in high density remote access products at an entry-level price. And with Cisco IOS™ compatible configuration, the Perle 833IS is immediately productive with its low learning curve for Cisco-qualified network administrators.

## Fully Integrated High Speed Remote Access Solution

### Features and Benefits:

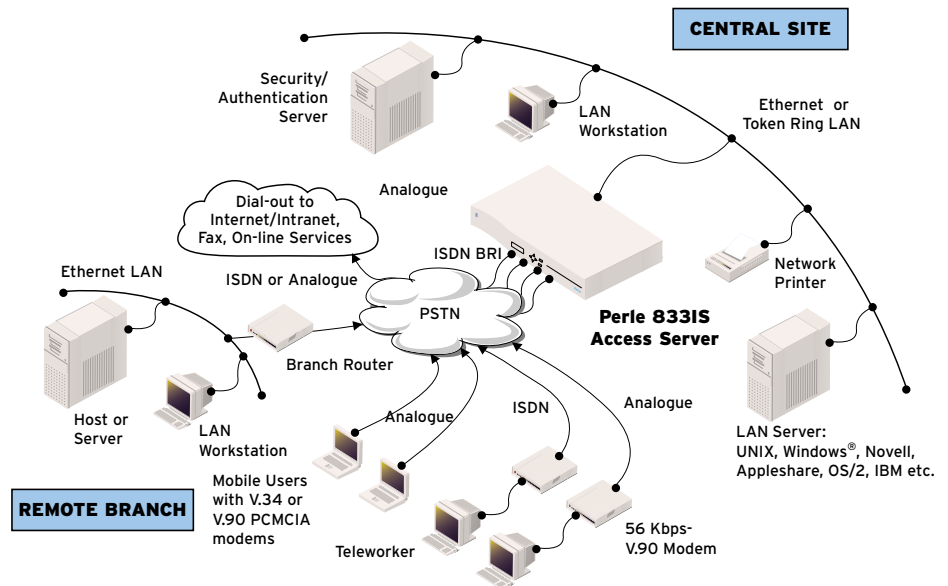
- Cisco IOS™ style command line configuration to fit seamlessly into Cisco-based networks
- Integrated 56 Kbps-V.90, V.34 modem and ISDN technology provides the most cost-effective networking for your users
- Support for analogue and ISDN calls on the same BRI line simplifies access for both types of users
- Scaleable support for 8 to 16 concurrent users allows users to expand with the growth of their remote dial-in population
- Multi-level security features including NT Domain Server Authentication ensure only authorised users have access to corporate resources
- Windows-based GUI Manager simplifies network control
- Full function dial-out modem pooling enables LAN-based users to send faxes\* or dial out to the Internet or other on-line services
- Convenient front panel display and keypad for easy configuration
- Lifetime warranty for security and peace of mind

### Applications

- Central site dial-in remote access with ISDN BRI service
- Departmental/workgroup dial-in remote access
- Dial-out modem pooling
- LAN-to-LAN routing

## Remote Connectivity

The Perle 833IS supports 8 to 16 concurrent dial-in, dial-out or LAN to LAN users across 4 or 8 ISDN BRI (digital or analogue) connections. Expansion of the Perle 833IS is achieved quickly, easily and cost-effectively through the addition of a WAN interface card. These cards are available with or without integrated analogue/digital modems, allowing Network Managers to efficiently match the requirements of their dial-in user population. By allowing both ISDN and analogue calls to be made across the same BRI line with one unique telephone number, the Perle 833IS offers a simplified approach to deploying both ISDN and analogue modem technology.



## Secure Access

Security is a key issue when supporting remote users. To meet those needs, the Perle 833IS has multi-level security and management features and supports major security standards including PAP, CHAP, RADIUS, NetWare Bindery, Axent DSS, SecurID-ACE/Server and Windows NT Domain Server.

## Dial-out, Faxing-out

The Perle 833IS unique dial-out capabilities allow LAN-based users to easily and efficiently send faxes\* or dial out to the Internet or other on-line services using the server's integrated modems. Perle 833IS servers can also be grouped into a single dial-out pool, simplifying the set-up and installation for dial-out users.

## Class Leading Service and Support

The Perle 833IS is backed by the best service and support in the industry including Perle's unique lifetime warranty.

## Technical Specifications

### Connectivity

#### LAN Interface

- 10/100 Mbps Fast Ethernet
- 4/16 Mbps Token Ring

#### WAN Interface

- 4 or 8 ISDN BRI (U or S/T) with or without V.90 modems

#### Management Port

- RS232 DB25 Female

### Physical Architecture

#### System Card

- 50 MHz Power PC RISC
- 16MB RAM
- 4MB FLASH
- 4 ISDN BRI

#### Expansion Card

- 4 ISDN BRI

#### Modem

- Data modulations supported Dial-in: V.90, K56Flex, V.34, V.32, V.23, V.22, V.21
- Dial-out: V.34, V.32, V.23, V.22, V.21
- Modem Protocols: V.42, MNP 2-5, MNP10, T.30 Fax, Facsimile Class 2

#### Front and Rear Panel Indicators

- Power LED
- System operational LED
- LAN connect LED
- 2 x 16 LCD panel

#### Power, Dimensions and Weight

- Operating Voltage  
100-240 VAC (auto-sensing), 50-60 Hz,
- 67 x 430 x 310mm
- 5.5kg

### Environmental

- Operating Temperature: 0°C-40°C
- BTU Output: 100 BTU/hour maximum
- Humidity 0-95% non-condensing

### Approvals

- European Union, China, Japan, Australia and Hong Kong
- USA, Canada

### Emissions

- FCC Part 15, Class A, Issue2,
- EN 55022
- VCCI Class 1

### Telephony

- FCC Part 68, IC CS03
- European Harmonised Standard CTR3
- TS 031

### Networking

#### Administration

- Manager works from remote or local PCs
- CISCO IOS™ Style Command Line Configuration
- Management Software:  
Windows 2000, NT, Me, 98, 95
- SNMP support over TCP/IP including MIB II and other extensions
- IP Address Management through DHCP Server, IP Address pool, dial-in client, user record, or port record
- SYS LOG, PPP Log

#### Network Protocols

- PPP, ML PPP, ARAP 1 or ARAP 2 protocol
- TCP/IP, IPX
- NetBEUI
- LLC (802.2)
- DHCP BOOTP
- SNMP
- EuroISDN ETSI Net3

### LAN-to-LAN

- IP, IPX, PPP, ML PPP, RIP v1.0, 2.0, IPCP, IPXCP, Static routing
- Dial on demand, ISDN Spooling

### Security

- Windows NT Domain Server Authentication
- PAP, CHAP
- Call-back: Windows 2000, NT, Me, 98, 95
- Packet Filtering Firewall: IPX or TCP/IP
- RADIUS
- Internal User List
- NetWare Bindery Support
- Share internal user lists between Perle 833IS's
- Axent DSS
- SecurID-ACE/Server
- Password aging

### Warranty

- Limited lifetime warranty

### Maintenance Agreement

- To ensure rapid system recovery, maintenance agreements are available for Perle hardware. These include on-site service in many areas, or express part replacement. Visit Perle's Web site for coverage details.

[www.perle.com/support/service\\_sales.html](http://www.perle.com/support/service_sales.html)

### Free Software

- Perle provides free software upgrades to registered users via Perle's Web site. [www.perle.com/downloads](http://www.perle.com/downloads)

Visit the Perle Web site for up-to-date product support and technical information.

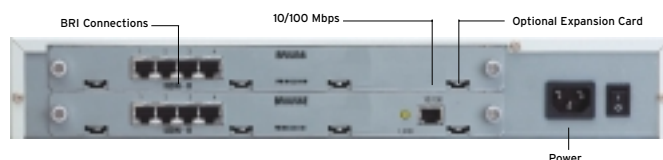
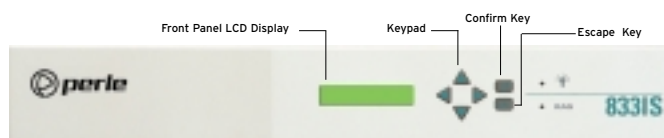
[www.perle.com/products](http://www.perle.com/products)

\* In conjunction with third party fax software packages

### Ordering Information

For Product Codes and Model Descriptions, please visit Perle's Web site at [www.perle.com/products](http://www.perle.com/products) and select Product Family Access Servers

## Perle 833IS - 16 channel Ethernet version



## Perle Authorised Distributor



**Perle Systems Europe Limited**  
3 Wintersells Road  
Byfleet, Surrey  
KT14 7LF, United Kingdom  
[www.perle.com](http://www.perle.com)

**Contact Perle**  
Tel. +44 (0)1932 792592  
Fax +44 (0)1932 792600  
[infoeu@perle.com](mailto:infoeu@perle.com)

Perle products are constantly reviewed and updated to meet customers' needs, as such specifications and capabilities are subject to change without notice. We endeavor to keep product descriptions as current as possible; for the latest up-to-date information, please visit our web site at [www.perle.com](http://www.perle.com). Perle is a registered trademark of Perle Systems. All other product names are trademarks of their respective holders. Copyright©Perle.