



### A High Density, high speed Remote Access Solution for ISPs and Corporate Users

#### Features and Benefits:

- Integrated 56 Kbps-V.90, V.34 modem and ISDN technology to meet the exacting needs of today's enterprise user
- Scalable dial-in, dial-out and LAN-to-LAN connectivity for 12 to 96 (T1/PRI) simultaneous users
- Dual, hot swappable power supplies ensure maximum uptime for all users
- High performance multi-processor, multi-tasking architecture offers unparalleled reliability
- Compact PCI® connector technology designed for high performance remote access applications
- External loading design means fast addition expansion cards
- Lifetime warranty for security and peace of mind

#### Application

- Central site dial-in remote access with ISDN PRI service
- Dial-out modem pooling
- LAN-to-LAN Routing
- ISP Services

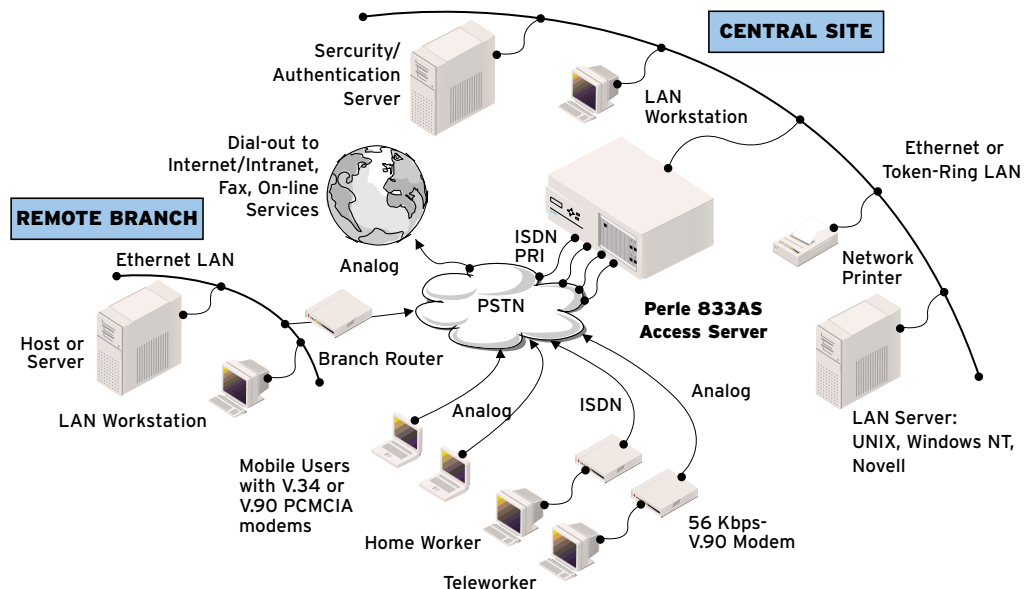
The Perle 833AS Access Server is a scalable, high density, high speed remote access solution ideally suited to meet the reliability and performance demands of large Internet Service Providers and Enterprise LANs.

#### Remote Connectivity

The Perle 833AS provides scalable dial-in, dial-out modem pooling and LAN-to-LAN connectivity to a large number of users. Remote users can connect with analog and digital lines with support for up to 96 simultaneous connections.

#### Designed for Flexibility

Unlike many solutions based on a PC chassis, the Perle 833AS is equipped with Compact PCI® card connector technology. These cards are all conveniently accessed from the outside of the unit and are specially designed for telecom and high performance remote access applications. And as the only access server product on the market that comes with hot swappable dual power supplies and dual cooling fans as standard, the Perle 833AS ensures reliability and maximum up-time for all users.



#### Secure Access

Security is a key issue when supporting remote users. To meet those needs, the Perle 833AS has multi-level security and management features and supports major security standards including PAP, CHAP, RADIUS, NetWare Bindery, Axent DSS, SecurID-ACE/Server and Windows NT Domain Server.

#### Dial-out/Fax-out

The Perle 833AS's unique dial out capabilities allow LAN-based users to easily and efficiently send faxes<sup>1</sup> or dial-out to the Internet or other on-line services using the server's integrated modems.

#### Class Leading Service and Support

The Perle 833AS is backed by the best service and support in the industry including Perle's unique lifetime warranty.

## Technical Specifications

### Connectivity

#### LAN Interface

- 10/100 Mbps Fast Ethernet
- 4/16 Mbps Token Ring

#### WAN Interface

- 1 to 4 port T1/PRI

### Physical

#### Architecture

##### System Card

- 133 MHz Power PC RISC
- 16 - 32 MB RAM
- 4MB FLASH

##### Feature Card

- Single or Dual T1/PRI telco line card
- Digital modem card: DSP12, 18, 24 or 30 available for up to 120 (E1)

##### Modem

- Data modulations supported: - Dial-in: V.90, K56Flex, V.34, V.32, V.23, V.22, V.21 - Dial-out: V.34, V.32, V.23, V.22, V.21
- Modem Protocols: V.42, MNP 2-5, MNP 10, T.30 Fax, Fax Class 2

##### Power, Dimensions and Weight

- Operating Voltage  
100-125 VAC, 60 Hz,  
200-240 VAC, 50 Hz
- 8.75" X 17.25" X 16.75" (HxWxD)
- 33 lbs

##### Environmental

- Operating Temperature: 50° F - 80° F
- BTU Output: 400 BTU/hour maximum
- Humidity: 20-80% non-condensing

##### Approvals

- USA, Canada, European Union, South Africa, China, Japan, Australia and Hong Kong

##### Emissions

- FCC Part 15, Class A
- VCCI

### Telephony

- CE188X, FCC Part 68, IC CS03, JATE, BAPT 223 ZV 25

### Networking

#### Administration

- Manager works from remote or local PCs
- Cisco IOS™ Style Command Line Configuration\*
- Management Software:  
Windows 95, 98, Me, NT, 2000
- SNMP support over TCP/IP including MIB II and other extensions
- IP Address Management through DHCP Server, IP Address pool, dial-in client, user record, or port record
- SYS LOG\*

#### Network Protocols

- PPP, ML PPP, ARAP 1 or ARAP 2 protocol
- TCP/IP, IPX
- NetBEUI
- LLC (802.2)
- DHCP BOOTP
- SNMP

#### T1

- US NI-2, AT&T TR 41449 (4ESS, 5ESS), NT DMS100, DMS250, Japan INSnet 1500
- D4 (SF), ESF
- AMI, B8ZS, JBZS
- E&M Wink Start, E&M Delay Start, E&M Immediate Start, FXS Loop Start, FXS Ground Start, SAS Loop Start, SAS Ground Start, Q.931/Q.921 message-based

#### LAN-to-LAN

- IP, IPX, PPP, ML PPP, RIP v1.0, 2.0, IPCP, IPXCP, Static or Dynamic routing
- Dial on demand, ISDN Spoofing

### Security

- Windows NT Domain Server Authentication
- PAP, CHAP
- Call-back: Windows 2000, NT, Me, 98, 95
- Packet Filtering Firewall: IPX or TCP/IP
- RADIUS
- Internal User List
- NetWare Bindery Support
- Share internal user lists between Perle 833AS's
- Axent DSS
- SecurID-ACE/Server
- Password aging

### Warranty

- Limited lifetime warranty

### Maintenance Agreement

- To ensure rapid system recovery, maintenance agreements are available for Perle hardware. These include on-site service in many areas, or express part replacement. Visit Perle's Web site for coverage details.  
[www.perle.com/support/service\\_sales.html](http://www.perle.com/support/service_sales.html)

### Free Software

- Perle provides free software upgrades to registered users via Perle's Web site.  
[www.perle.com/downloads](http://www.perle.com/downloads)

Visit the Perle Web site for up-to-date product support and technical information.

[www.perle.com/products](http://www.perle.com/products)

\* Call for availability

† In conjunction with third party fax software package

### Ordering Information

For Product Codes and Model Descriptions, please visit Perle's Web site at [www.perle.com/products](http://www.perle.com/products) and select Product Family Access Servers

## Perle Authorized Distributor



**Perle Systems Inc.**  
565 Marriott Drive, Suite 850  
Nashville, TN 37214  
[www.perle.com](http://www.perle.com)

**Contact Perle**  
**Tel. 800 GO PERLE**  
**Fax 615 872 0771**  
**[info@perle.com](mailto:info@perle.com)**

Perle products are constantly reviewed and updated to meet customers' needs, as such specifications and capabilities are subject to change without notice. We endeavor to keep product descriptions as current as possible; for the latest up-to-date information, please visit our web site at [www.perle.com](http://www.perle.com). Perle is a registered trademark of Perle Systems. All other product names are trademarks of their respective holders. Copyright © Perle.