



The Perle 833 is a dial-up remote access server for connecting telecommuters and mobile users to a corporate LAN. Remote PCs act like a local node on the LAN and can access all network resources as if they were locally connected. Backed by a lifetime warranty, the Perle 833 is a full function, secure remote access solution which is ideal for small companies and branch offices.

### Complete Remote Access Solution

#### Features and Benefits:

- 2, 4, or 8 high speed dial-in port models to meet all your networking needs
- Supports all major desktop operating systems for greater network flexibility
- Supports all major LAN operating systems to access all network resources
- Multi-level security features including NT Domain Server Authentication safeguards your network
- Local or remote management functions can be conveniently managed from anywhere on the network
- Full function dial-out modem pooling enables LAN-based users to send faxes\* or dial-out to the Internet or other on-line services
- Convenient front panel display and keypad for easy configuration
- Multi-language support to meet your needs, regardless of your language or location
- Lifetime warranty for security and peace of mind

#### Applications

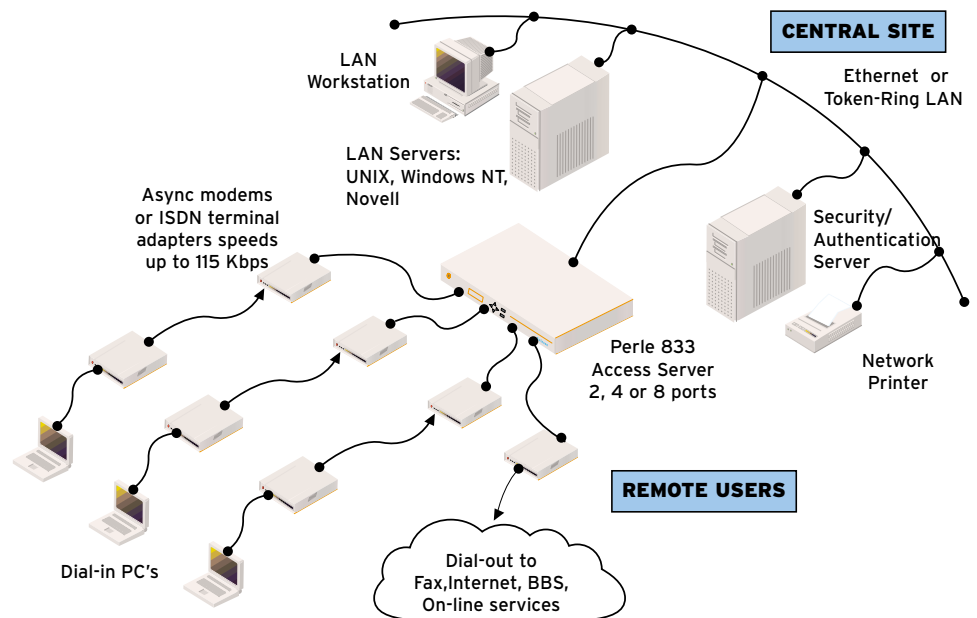
- Central site modem dial-in remote access
- Departmental/workgroup dial-in remote access
- Dial-out modem pooling

### Complete RAS Solution

The Perle 833 Remote Access Server is a reliable and complete remote access server solution, consisting of a dial-in server with management, dial-out software and client software (unlimited licences). For Windows 95, 98, Me, NT and 2000 Workstation users, the native dial-up networking facility is fully supported.

### Secure Access

Security is a key issue when supporting remote users. To meet those needs, the Perle 833 has multi-level security and management features and supports major security standards including PAP, CHAP, RADIUS, NetWare Bindery, Axent DSS, SecurID-ACE/Server and Windows NT Domain Server.



### Dial-out/Fax-out

The Perle 833's unique dial out capabilities allow LAN-based users to easily and efficiently send faxes\* or dial-out to the Internet or other on-line services. Perle 833 servers can also be grouped into a single dial-out pool, simplifying the set-up and installation for dial-out users.

### Local, Remote Management

With its Windows-based manager software, the Perle 833 can be readily installed and managed from a PC attached either to the LAN, or remotely via high speed modems. It even has a front panel display and keypad so that some configuration can be performed conveniently at the server, if required.

### Class Leading Service and Support

The Perle 833 is backed by the best service and support in the industry including Perle's unique lifetime warranty.

## Technical Specifications

### Connectivity

#### LAN Interface

##### Ethernet

- 10 BaseT (RJ-45)
- 10 Base5 (AUI)

##### Token-Ring

- UTP, Type 3 (RJ-45)
- STP, Type 1 (DB-9)

#### WAN Interface

- 2, 4 or 8 ports
- Asynchronous EIA/TIA-232-E Serial Ports (up to 115 Kbps per port)
- Male DB9 EIA/TIA 574 connectors
- Compatible with external modems and ISDN terminal adapters

### Physical

#### Architecture

- 32-bit RISC Processor
- AMD 29200 (2 and 4 ports)
- AMD 29240 (8 ports)
- 1 MB Flash ROM
- 2 MB RAM

#### Front and Rear Panel Indicators

- Power LED
- System operational LED
- LAN connect LED
- 2 x 16 LCD panel

#### Power, Dimensions and Weight

- Operating Voltage: 100–240 VAC (auto-sensing), 50–60Hz

- 40 watts
- 1.97" x 17" x 9.84" (HxWxD)
- 6.8 lbs

#### Environmental

- Operating Temperature: 32°F – 104°F
- BTU Output: 400 BTU/hour max.

#### Approvals

- FCC Class A, TUV, UL, CSA, DOC, CE

### Networking

#### Administration

- Manager works from remote or local PCs
- Management Software: Windows 2000, NT, Me, 98, 95
- IP Address Management through DHCP Server, IP Address pool, dial-in client, user record, or port record

#### Network Protocols

- ARAP 1 or ARAP 2 protocol
- PPP
- IPX
- TCP/IP
- NetBEUI
- LLC (802.2)
- DHCP BOOTP
- SNMP

#### Security

- Windows NT Domain Server Authentication
- PAP, CHAP
- Call-back: Windows 2000, NT, Me, 98, 95
- Firewall: TCP/IP or IPX packet filtering, protocol enable/disable
- RADIUS

- Internal User Lists
- Share internal user lists between Perle 833s
- NetWare Bindery Support
- Axent DSS
- SecurID-ACE/Server
- Password aging function

#### Language Support

- English, French, Italian, German, Spanish and Japanese

#### Warranty

- Limited lifetime warranty

#### Maintenance Agreement

- To ensure rapid system recovery, maintenance agreements are available for Perle hardware. These include on-site service in many areas, or express part replacement. Visit Perle's Web site for coverage details.  
[www.perle.com/support/service\\_sales.html](http://www.perle.com/support/service_sales.html)

#### Free Software

- Perle provides free software upgrades to registered users via Perle's Web site.  
[www.perle.com/downloads](http://www.perle.com/downloads)

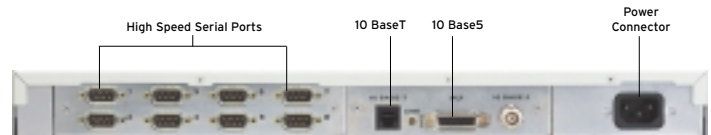
Visit the Perle Web site for up-to-date product support and technical information.

[www.perle.com/products](http://www.perle.com/products)

\* in conjunction with third party fax software packages

#### Ordering Information

For Product Codes and Model Descriptions, please visit Perle's Web site at [www.perle.com/products](http://www.perle.com/products) and select Product Family Access Servers



### Perle Authorized Distributor



**Perle Systems Inc.**  
565 Marriott Drive, Suite 850  
Nashville, TN 37214  
[www.perle.com](http://www.perle.com)

**Contact Perle**  
**Tel. 800 GO PERLE**  
**Fax 615 872 0771**  
**info@perle.com**

Perle products are constantly reviewed and updated to meet customers' needs, as such specifications and capabilities are subject to change without notice. We endeavor to keep product descriptions as current as possible; for the latest up-to-date information, please visit our web site at [www.perle.com](http://www.perle.com). Perle is a registered trademark of Perle Systems. All other product names are trademarks of their respective holders. Copyright©Perle.