



### Multipurpose Network Serial/Access Server

#### Features & Benefits

- High performance serial server
- Flexible Remote Access Server
- Extremely easy to configure
- Comprehensive security features
- Free fixed port software (Trueport)
- Free Flash firmware upgrades
- Comprehensive management options
- Rack and desk mount options
- Lifetime warranty for security and peace of mind

#### Applications

- Connect EPOS devices over the LAN
- Access serial devices for manufacturing process control
- Provide remote access to users and customers
- Provide terminal/printer access within harsh environments
- Connect modem pools for dial-in/dial-out purposes
- Providing connectivity in remote branches

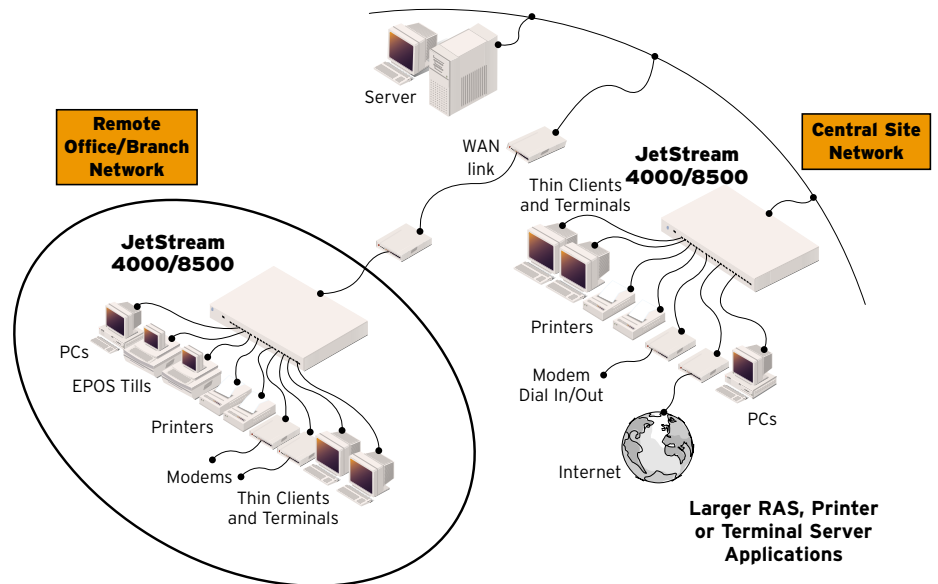
JetStream offers a cost effective and efficient way of communicating with serial devices over a LAN or WAN. JetStream provides 8, 16 or 24 serial ports that can access or be accessed by various systems across a network. This eliminates the need for multiple servers with serial port cards and reduces costly cabling.

#### Ease of Use

The JetStream is extremely easy to configure directly or via IP using Command Line, character based menus or a web browser.

#### Pseudo or Fixed Connections

The JetStream is capable of pseudo connections to servers via Telnet or Rlogin without additional software. However, where a server's application needs to access a fixed TTY or COM ports, Perle provides software called Trueport free with every unit. When using this application the JetStream ports appear as standard fixed serial ports.



#### Multiple Applications

The JetStream is an extremely flexible solution capable of supporting a number of different applications including:

- RAS – JetStream can perform as a remote access server using SLIP and PPP with security provided by PAP, CHAP, call-back and Radius support
- Printing – JetStream can act as a print server using RCP, LPD or Trueport software
- POS and Data Acquisition – JetStream connects various devices such as barcodes, scanners, weigh scales, tills, etc using Perle's Trueport software
- Traditional Terminal server – JetStream has all the features you would expect from a brand leader

#### Class Leading Support and Warranty

The Perle JetStream is backed by the best service and support in the industry including Perle's unique lifetime warranty.

## Technical Specifications

### Connectivity

#### Serial Ports

- JS8516 model: 16 RS232 serial ports
- JS8524 model: 24 RS232 serial ports
- JS8516/422 model: 16 RS422 serial ports
- JS4008 model: 8 RS232 serial ports + 1 parallel port

#### BackBone LAN Attachment

- 10BaseT RJ45 + AUI

#### Management Port

- RS232 DB25 Female (DB9 on the JS4008)

### Physical

#### Architecture

- 32 bit processor
- Custom ASICs
- Up to 230 Kbps throughput per port

#### Serial Port Signals/Protection

- TXD, RXD, RTS, CTS, DTR, DSR, DCD and GND
- All serial ports are ESD protected to 15kV through air

#### LED Indicators

- Main – Power and Network
- Serial – Send and Receive integrated into each RJ45 connector

#### Power, Dimensions and Weight

- Internal, auto-ranging, 110-240v  
JS8500 25W, JS4000 10W
- JS8500 (h) 45mm (l) 230mm (w) 430mm (without ears)
- JS4000 (h) 45mm (l) 230mm (w) 200mm
- JS8500 - 2.0 kg JS4000 - 0.9 kg

### Environmental

- Operating Temperature: 0°C to 40°C
- Storage Temperature: -30°C to 70°C
- Operating Humidity: 5 to 95% RH (non-condensing)
- Storage Humidity: 5 to 95% RH (non-condensing)

### Approvals

- EN55022 Class A, FCC A, CSA/NRTLc, IEC950, EN60950, CE, CTick

### Software

#### Administration

Local or Remote management using:

- Command Line
- Menu Command Interfaces
- JETset Web-based configuration utility
- JETstart Web-based getting started utility
- Multi-Language Support: English, French, German, Italian, Spanish, Mandarin Chinese, and ability to load a custom language file

#### Network Protocols

- TCP/IP, UDP, ICMP, SNMP, ARP, Proxy ARP, RARP, DHCP, BOOTP, RIP and Static Routing, PPP, SLIP, CSLIP, TELNET, RLOGIN, CLEAR TCP, HTTP, WINS, DNS

#### Remote Access and Security

- Support for up to 20 different modem types initialisation strings
- RADIUS authentication (RFC2058)
- RADIUS accounting (RFC2059)
- PAP
- CHAP
- Fixed and Roaming Callback

## Upgrades

### FLASH update via:

- Network using BOOTP, DHCP or TFTP
- Local management port using Jetload

### TruePort

Fixed TTY/Com port emulation software for:

- AIX
- SCO UnixWare
- SCO OpenServer
- NCR
- HP UX
- SUN Solaris
- Microsoft Windows NT

### Warranty

- Limited lifetime warranty

### Maintenance Agreement

- To ensure rapid system recovery, maintenance agreements are available for Perle hardware. These include on-site service in many areas, or express part replacement. Visit Perle's Web site for coverage details.

[www.perle.com/support/service\\_sales.html](http://www.perle.com/support/service_sales.html)

### Free Software

- Perle provides free software upgrades to registered users via Perle's Web site.

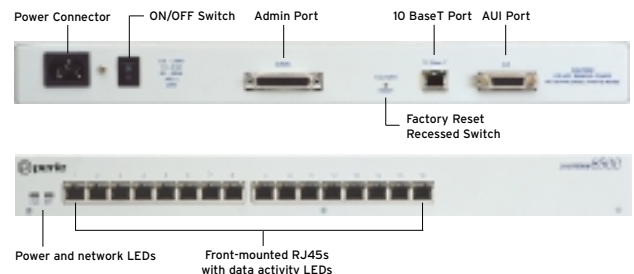
[www.perle.com/downloads](http://www.perle.com/downloads)

Visit the Perle Web site for up-to-date support and availability information.

[www.perle.com/products](http://www.perle.com/products)

### Ordering Information

For Product Codes and Model Descriptions, please visit Perle's Web site at [www.perle.com/products](http://www.perle.com/products) and select Product Family Serial Servers



## Perle Authorised Distributor



**Perle Systems Europe Limited**  
3 Wintersells Road  
Byfleet, Surrey  
KT14 7LF, United Kingdom  
[www.perle.com](http://www.perle.com)

**Contact Perle**  
Tel. +44 (0)1932 792592  
Fax +44 (0)1932 792600  
[infoeu@perle.com](mailto:infoeu@perle.com)