



The LanStream 2000 is a serial server with built in hub providing a multifunction solution for combined serial and LAN networking applications. Cutting the cost of ownership and the need for multiple units, LanStream 2000 can act as a Serial Server, Remote Access Server, and LAN Hub.

### Ease of Use

The LanStream is extremely easy to configure directly or via IP using command line, character based menus or a web browser.

### Pseudo or Fixed Connections

The LanStream is capable of pseudo connections to servers via Telnet or Rlogin without additional software. However, where a server's application needs to access fixed TTY or COM ports, Perle provides software called Trueport free with every unit. When using the application the LanStream ports appear as standard fixed serial ports.

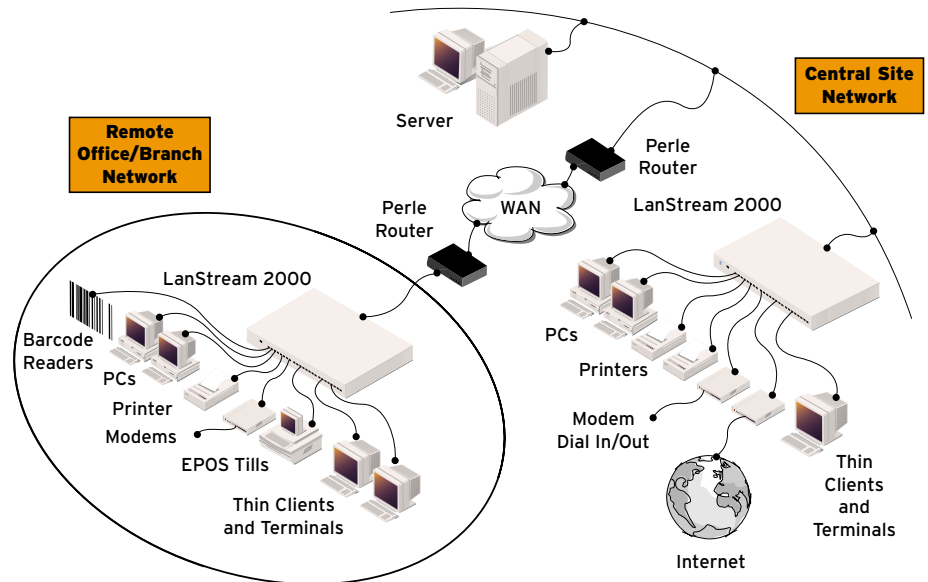
### Integrated Multifunction Serial Server and Hub

#### Features & Benefits

- High performance serial server
- Integrated 10BaseT Hub ports
- Flexible Remote Access Server
- Extremely easy to configure
- Comprehensive security features
- Free Fixed port software (Trueport)
- Free Flash firmware upgrades
- Comprehensive management options
- Rack and desk mount options
- Lifetime warranty for security and peace of mind

#### Applications

- Connect EPOS devices over the LAN
- Access serial devices for manufacturing process control
- Provide remote access to users and customers
- Connect PC's and Workstations to office LAN
- Provide Terminal/printer access within harsh environments
- Connect modem pools for dial-in/dial-out purposes
- Providing connectivity in remote branches



### Multiple Applications

The LanStream is an extremely flexible solution capable of supporting a number of different applications including:

- RAS – LanStream can perform as a remote access server using SLIP and PPP with security provided by PAP, CHAP, callback and Radius support
- Printing – LanStream can act as a print server using RCP, LPD or Trueport software
- POS and Data Acquisition – connect to various devices such as barcodes, scanners, weigh scales, tills, etc using Perle's Trueport software
- Traditional Terminal Server – LanStream has all the features you would expect from a brand leader
- Hub – with 8 or 16 hub ports, office PC's can also be connected

### Class Leading Support and Warranty

The Perle LanStream is backed by the best service and support in the industry including Perle's unique lifetime warranty.

## Technical Specifications

### Connectivity

#### Serial Ports

- 8 or 16 shielded RJ45 ports

#### Hub Ports

- 8 or 16 10BaseT Ethernet ports with shielded RJ45 connectors

#### BackBone LAN Attachment

- 10BaseT with uplink/hub (MDI/MDI-X) switch

#### Management Port

- 8-16H model has RS232 DB9 female
- 16-8H model has RS232 DB25 female

### Physical

#### Architecture

- 32 bit processor
- Custom ASICs
- Up to 230 Kbps throughput per port

#### Serial Port Signals/Protection

- TXD, RXD, RTS, CTS, DTR, DSR, DCD and GND
- All serial ports are ESD protected to 15KV through air

#### LED Indicators

- Main – Power and Network;
- Serial – Send and Receive integrated into each RJ45 connector
- Hub – Link/Traffic and Partition

#### Power, Dimensions and Weight

- Internal, auto-ranging, 110-240V
- (h) 45mm (l) 230mm (w) 430mm (without ears)
- 2.0 kg

#### Environmental

- Operating Temperature: 0° to 40°C
- Storage Temperature: -30° to 70°C
- Operating Humidity: 5 to 95% RH (non-condensing)
- Storage Humidity: 5 to 95% RH (non-condensing)

### Approvals

- EN55022 Class A, FCC A, CSA/NRTLc, IEC950, EN60950, CE, CTick

### Software

#### Administration

Local or Remote management using:

- Command Line
- Menu Command Interfaces
- JETset™ Web-based configuration utility
- JETstart™ Web-based getting started utility
- Multi-Language Support. English, French, German, Italian, Spanish, Mandarin Chinese, and ability to load a custom language file

#### Remote Access

- Support for up to 20 different modem types initialisation strings

#### Security

- RADIUS authentication (RFC2058)
- RADIUS accounting (RFC2059)
- PAP
- CHAP
- Fixed and Roaming Callback

#### Upgrades

FLASH update via:

- Network using BOOTP, DHCP or TFTP
- Local management port using Jetload™

#### Network Protocols

- TCP/IP
- UDP
- ICMP
- SNMP
- ARP, Proxy ARP, RARP
- DHCP, BOOTP
- RIP and Static Routing
- PPP, SLIP, CSLIP
- TELNET, RLOGIN
- CLEAR TCP
- HTTP
- WINS
- DNS

### TruePort

Fixed TTY/COM port emulation software for:

- AIX
- SCO UnixWare
- SCO OpenServer
- HP UX
- SUN Solaris
- UNIX SVR4
- Microsoft Windows® 2000
- Microsoft Windows® NT

### Warranty

- Limited lifetime warranty

### Maintenance Agreement

- To ensure rapid system recovery, maintenance agreements are available for Perle hardware. These include on-site service in many areas, or express part replacement. Visit Perle's Web site for coverage details.  
[www.perle.com/support/service\\_sales.html](http://www.perle.com/support/service_sales.html)

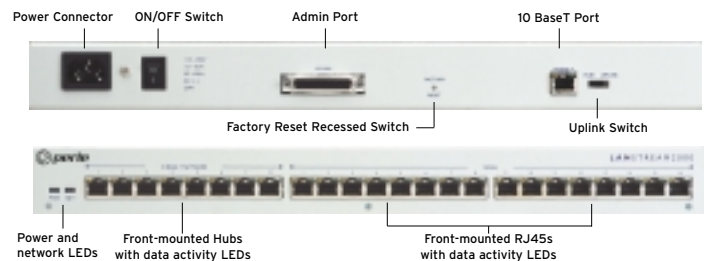
### Free Software

- Perle provides free software upgrades to registered users via Perle's Web site.  
[www.perle.com/downloads](http://www.perle.com/downloads)

Visit the Perle Web site for up-to-date support and availability information.  
[www.perle.com/products](http://www.perle.com/products)

### Ordering Information

For Product Codes and Model Descriptions, please visit Perle's Web site at [www.perle.com/products](http://www.perle.com/products) and select Product Family Serial Servers



## Perle Authorised Distributor



**Perle Systems Europe Limited**  
3 Wintersells Road  
Byfleet, Surrey  
KT14 7LF, United Kingdom  
[www.perle.com](http://www.perle.com)

**Contact Perle**  
Tel. +44 (0)1932 792592  
Fax +44 (0)1932 792600  
[infoeu@perle.com](mailto:infoeu@perle.com)

Perle products are constantly reviewed and updated to meet customers' needs, as such specifications and capabilities are subject to change without notice. We endeavor to keep product descriptions as current as possible; for the latest up-to-date information, please visit our web site at [www.perle.com](http://www.perle.com). Perle is a registered trademark of Perle Systems. All other product names are trademarks of their respective holders. Copyright©Perle.