



A High Density, high speed Remote Access Solution for ISPs and Corporate Users

Features and Benefits:

- Integrated 56 Kbps-V.90, V.34 modem and ISDN technology to meet the exacting needs of today's enterprise user
- Scalable dial-in, dial-out and LAN-to-LAN connectivity for 12 to 120 (E1/PRI) simultaneous users
- Dual, hot swappable power supplies ensure maximum uptime for all users
- High performance multi-processor, multi-tasking architecture offers unparalleled reliability
- Compact PCI® connector technology designed for high performance remote access applications
- External loading design means fast addition expansion cards
- Lifetime warranty for security and peace of mind

Application

- Central site dial-in remote access with ISDN PRI service
- Dial-out modem pooling
- LAN-to-LAN Routing
- ISP Services

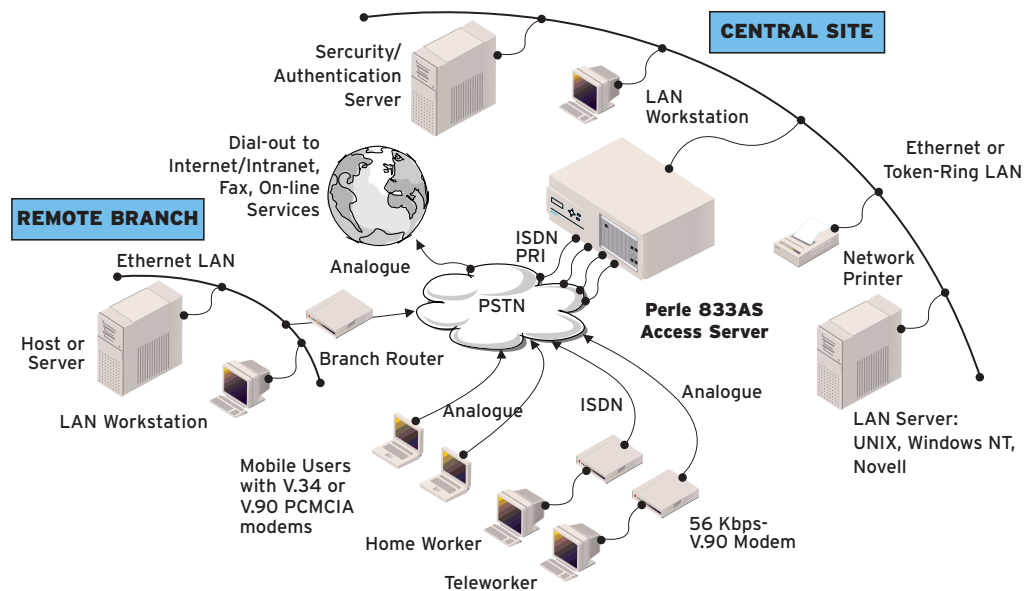
The Perle 833AS Access Server is a scaleable, high density, high speed remote access solution ideally suited to meet the reliability and performance demands of large Internet Service Providers and Enterprise LANs.

Remote Connectivity

The Perle 833AS provides scaleable dial-in, dial-out modem pooling and LAN-to-LAN connectivity to a large number of users. The native dial-up networking facility is fully supported for Windows XP, NT, 2000, 98 and 95. Remote users can connect with analogue and digital lines with support for up to 120 simultaneous connections.

Designed for Flexibility

Unlike many solutions based on a PC chassis, the Perle 833AS is equipped with Compact PCI® card connector technology. These cards are all conveniently accessed from the outside of the unit and are specially designed for telecom and high performance remote access applications. And as the only access server product on the market that comes with hot swappable dual power supplies and dual cooling fans as standard, the Perle 833AS ensures reliability and maximum up-time for all users.



Secure Access

Security is a key issue when supporting remote users. To meet those needs, the Perle 833AS has multi-level security and management features and supports major security standards including PAP, CHAP, RADIUS, NetWare Bindery, PassGo Defender, SecurID-ACE/Server and Windows NT Domain Server.

Dial-out/Fax-out

The Perle 833AS's unique dial out capabilities allow LAN-based users to easily and efficiently send faxes¹ or dial-out to the Internet or other on-line services using the server's integrated modems.

Class Leading Service and Support

The Perle 833AS is backed by the best service and support in the industry including Perle's unique lifetime warranty.

Technical Specifications

Connectivity

LAN Interface

- 10/100 Mbps Fast Ethernet
- 4/16 Mbps Token Ring

WAN Interface

- 1 to 4 port E1/PRI

Physical

Architecture

System Card

- 133 MHz Power PC RISC
- 16 - 32 MB RAM
- 4MB FLASH

Feature Card

- Single or Dual E1/PRI telco line card
- Digital modem card: DSP12, 18, 24 or 30 available for up to 120 (E1)

Modem

- Data modulations supported: - Dial-in: V.90, K56Flex, V.34, V.32, V.23, V.22, V.21 - Dial-out: V.34, V.32, V.23, V.22, V.21
- Modem Protocols: V.42, MNP 2-5, MNP 10, T.30 Fax, Fax Class 2

Power, Dimensions and Weight

- Operating Voltage
100-125 VAC, 60 Hz,
200-240 VAC, 50 Hz
- 223 X 438 X 425mm (HxWxD)
- 15kg

Environmental

- Operating Temperature: 10-27° C
- BTU Output: 400 BTU/hour maximum
- Humidity: 20-80% non-condensing

Approvals

- USA, Canada, European Union, South Africa, China, Japan, Australia and Hong Kong

Emissions

- FCC Part 15, Class A
- VCCI

Telephony

- CE188X, FCC Part 68, IC CS03, JATE, BAPT 223 ZV 25

Networking

Administration

- Manager works from remote or local PCs
- Management Software:
Windows 95, 98, Me, NT, 2000
- SNMP support over TCP/IP including MIB II and other extensions
- IP Address Management through DHCP Server, IP Address pool, dial-in client, user record, or port record
- PPP Log

Network Protocols

- PPP, ML PPP, ARAP 1 or ARAP 2 protocol
- TCP/IP, IPX
- NetBEUI
- LLC (802.2)
- DHCP BOOTP
- SNMP

E1

- EuroISDN, ETSI, Net5
- MFCR2 ITU, China Variant
- E1 R2 MFC, India Variant

LAN-to-LAN

- IP, IPX, PPP, ML PPP, RIP v1.0, 2.0, IPCP, IPXCP, Static or Dynamic routing
- Dial on demand, ISDN Spoofing

Security

- Windows NT Domain Server Authentication
- PAP, CHAP
- Call-back: Windows 2000, NT, Me, 98, 95
- Packet Filtering Firewall: IPX or TCP/IP
- RADIUS
- Internal User List
- NetWare Bindery Support

- Share internal user lists between Perle 833AS's
- PassGo Defender (Axent DSS)
- SecurID-ACE/Server
- Password aging

Dial-out Client

The Perle 833AS dial-out client systems supports the following desktop operating systems

- Windows 9x, NT, 2000, XP
- Linux

Warranty

- Limited lifetime warranty

Maintenance Agreement

- To ensure rapid system recovery, maintenance agreements are available for Perle hardware. These include on-site service in many areas, or express part replacement. Visit Perle's Web site for coverage details.

www.perle.com/support/service_sales.html

Free Software

- Perle provides free software upgrades to registered users via Perle's Web site. www.perle.com/downloads

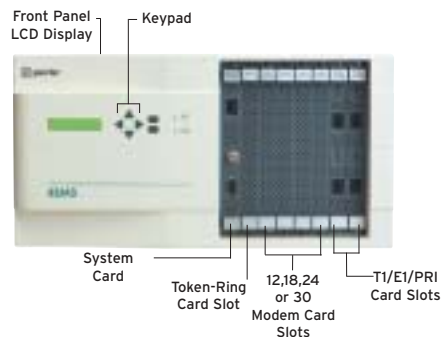
Visit the Perle Web site for up-to-date product support and technical information.

www.perle.com/products

† In conjunction with third party fax software package

Ordering Information

For Product Codes and Model Descriptions, please visit Perle's Web site at www.perle.com/products and select Product Family Access Servers



Perle products available from:



Perle Systems Europe Limited
3 Wintersells Road
Byfleet, Surrey
KT14 7LF, United Kingdom
www.perle.com

Contact Perle
Tel. +44 (0)1932 792592
Fax +44 (0)1932 792600
infoeu@perle.com

Perle products are constantly reviewed and updated to meet customers' needs, as such specifications and capabilities are subject to change without notice. We endeavor to keep product descriptions as current as possible; for the latest up-to-date information, please visit our web site at www.perle.com. Perle is a registered trademark of Perle Systems. All other product names are trademarks of their respective holders. Copyright©Perle.