



The only Network Controller for small AS/400 remote sites

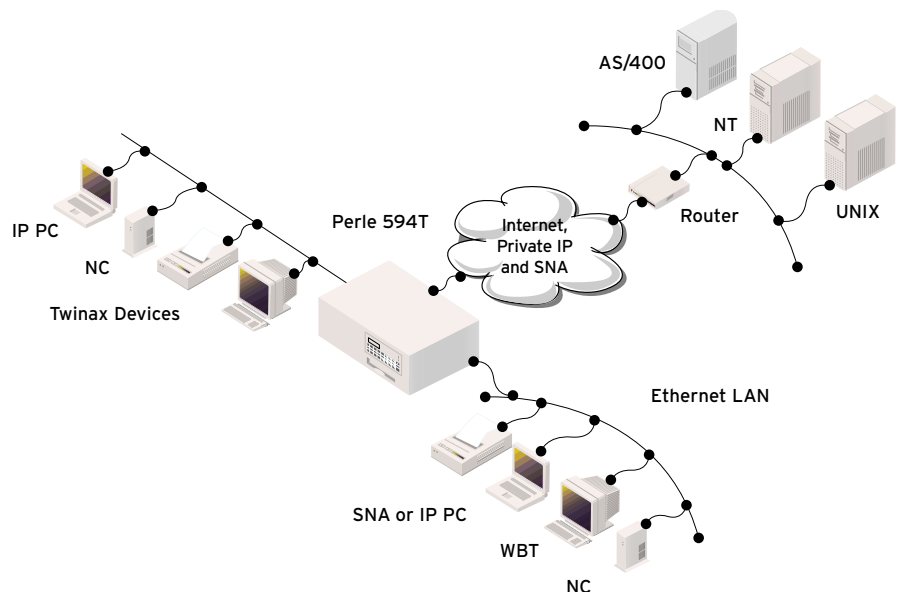
Features and Benefits:

- Supports up to 8 Twinax devices
- TCP/IP networking gives SNA support without the high cost of setting up and maintaining a multi-protocol wide area network (WAN)
- Virtual Private Network (VPN) capabilities for secure low cost networking over the Internet
- IP Routing Feature routes traffic from IP devices at remote sites onto the corporate WAN, eliminating the need for external routers or FRADs
- Fast Ethernet (10/100 Mbps) allows users to connect at 10 Mbps today and seamlessly migrate to 100 Mbps, without additional cost or administrative problems
- Software Download feature allows for efficient distribution and maintenance of all upgrades from one central location
- 100% IBM 5494 Compatible
- Lifetime warranty for security and peace of mind

The Perle 594T Network Controller provides AS/400 (iSeries) users with a cost efficient solution to assist them in their migration from SNA to IP networks. It is the best choice for AS/400 users requiring support of up to 8 Twinax-devices as well as IP desktops at their remote sites. This integrated platform lets you extend your AS/400 resources over any IP network (including the Internet) to your remote branch offices.

Migrating to a Single Protocol Network

The Perle 594T uses MPTN (Multi-protocol Transport Networking) to convert SNA 5250 data streams into IP packets for transfer across an IP network. This is more efficient than IP tunneling, provides greater reliability and is easier to manage than DLSw (Data Link Switching). The Perle 594T allows AS/400 users to move to a single network protocol (IP) while retaining valuable and reliable Twinax devices at remote sites.



IP Routing & VPN Features

With its optional integrated IP routing feature, the Perle 594T gives AS/400 users the ability to move IP traffic from IP-based devices across the corporate WAN, eliminating the need for routers at remote sites. The Perle 594T is the only solution that offers Virtual Private Networking (VPN) support to give users the ability to securely connect AS/400 branch offices over the Internet using IPsec (IP Security). IPsec is supported by all major networking providers as today's industry standard for creating VPNs.

Class Leading Service and Support

The Perle 594T is backed by the best service and support in the industry including Perle's unique lifetime warranty.

Technical Specifications

Optional Feature Cards

- 10/100 Mbps Fast Ethernet

IP Routing Features

- Optional IP Routing software
- Optional VPN software

Host Interface

- V.35, EIA 232D (V.24/V.28), X.21, Ethernet

WAN Protocols

- SDLC, SNA Sub-area network, X.25, X.25 bis auto dial, X.21, Frame Relay, TCP/IP, PPP, IPSec, IKE
- PU Type 2.1 connection for AS/400 communication
- RU size up to 1,024 bytes

Dimensions

- 6.25" x 17.25" x 16.25" (H x W x D)
- 25 lbs.

Operating Temperature

- 50°F-85°F

Humidity

- 20-80%, non – condensing

Operating Voltage

- 100-125VAC, 50-60Hz, 1.5A
- 200-240VAC, 50-60Hz, .75A

BTU Output

- 400/BTU hour max.

Memory

- 16 MB RAM Max.

Front Panel

- 16 character backlit status display with 24-key keypad for system setup/status inquiry

Approvals

- FCC, UL listed, CSA, CE, DOC, TUV, BZT

Configuration Language Support

- English, French, Italian, German, Spanish, Japanese

Twinaxial Specifications

- Cable length - 1,235 m. per port maximum

Workstations Supported

- All Twinaxial workstations, IBM PCs and compatibles supported by the IBM 5494
- IP over Twinax support

Ethernet Specifications

Ethernet LAN wiring supported:

- 10 BaseT unshielded twisted pair (10 and 10/100 Mbps)
- 100 BaseTX Cat.5-unshielded twisted pair (10/100 Mbps)

LAN Speed

- 10/100 Mbps

Warranty

- Limited lifetime warranty

Maintenance Agreement

- To ensure rapid system recovery, maintenance agreements are available for Perle hardware. These include on-site service in many areas, or express part replacement. Visit Perle's Web site for coverage details.
www.perle.com/support/service_sales.html

Free Software

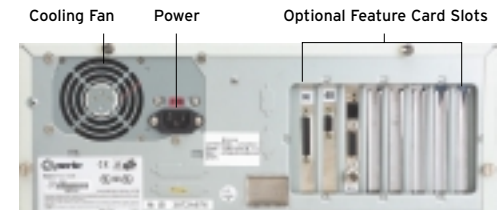
- Perle provides free software upgrades to registered users via Perle's Web site.
www.perle.com/downloads

Visit the Perle Web site for up-to-date product support and technical information.
www.perle.com/products

Ordering Information

For Product Codes and Model Descriptions, please visit Perle's Web site at www.perle.com/products and select Product Family AS/400 Connectivity

Perle 594T Network Controller



Perle Authorized Distributor



Perle Systems Inc.
565 Marriott Drive, Suite 850
Nashville, TN 37214
www.perle.com

Contact Perle
Tel. 800 GO PERLE
Fax 615 872 0771
info@perle.com

Perle products are constantly reviewed and updated to meet customers' needs, as such specifications and capabilities are subject to change without notice. We endeavor to keep product descriptions as current as possible; for the latest up-to-date information, please visit our web site at www.perle.com. Perle is a registered trademark of Perle Systems. All other product names are trademarks of their respective holders. Copyright©Perle.