



The only expandable Network Controller for AS/400 remote sites

Features and Benefits:

- TCP/IP networking gives SNA support without the high cost of setting up and maintaining a multi-protocol wide area network (WAN)
- Virtual Private Network (VPN) capabilities for secure, low cost networking over the Internet.
- IP Routing Feature routes traffic from IP devices at remote sites onto the corporate WAN, eliminating the need for external routers or FRADs
- Fast Ethernet (10/100 Mbps) allows users to connect at 10 Mbps today and seamlessly migrate to 100 Mbps, without additional cost or administrative problems
- Multi-session/multi-host support provides convenient and cost-effective access to multiple hosts simultaneously from a Twinax terminal, with no APPN overhead
- Software Download feature allows for efficient distribution and maintenance of all upgrades from one central location
- 100% IBM 5494 compatible
- Lifetime warranty for security and peace of mind

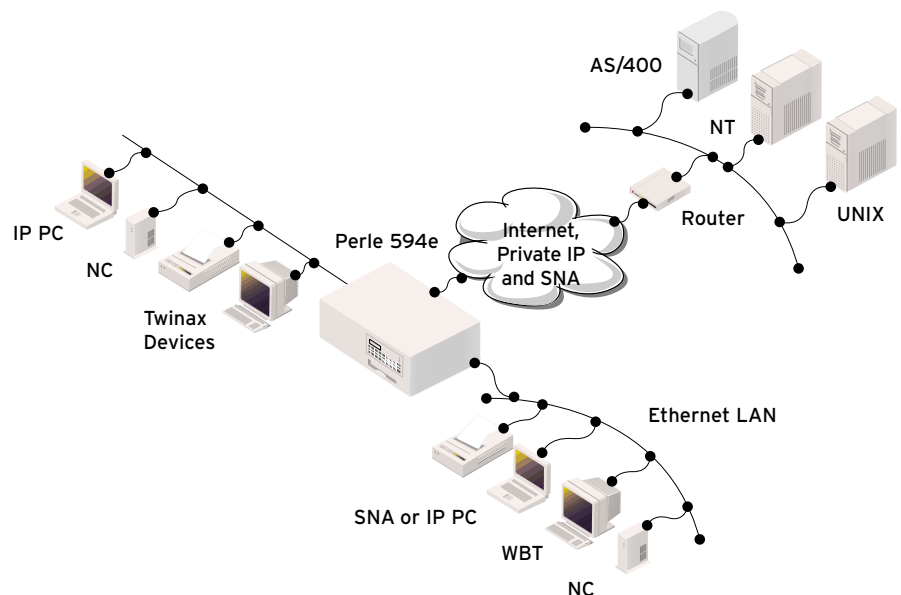
The Perle 594e Network Controller is the best choice to migrate remote AS/400 (iSeries) users from SNA to IP-networking. It supports up to 168 Twinax devices, IP desktops, and even dial-in users. This integrated platform is the ideal solution to extend your AS/400 resources over any IP network (including the Internet) to all your remote branch offices.

Migrating to a Single Protocol Network

The Perle 594e uses MPTN (Multi-protocol Transport Networking) to convert SNA 5250 data streams into IP packets for transfer across an IP network. This is more efficient than IP tunneling, provides greater reliability and is easier to manage than DLSw (Data Link Switching). MPTN also ensures that all applications (display and/or printer) are 100% supported over an IP network. The Perle 594e allows AS/400 users to move to a single network protocol (IP) while retaining valuable Twinax devices at remote sites.

IP Routing & VPN Features

With its optional integrated IP routing feature, the Perle 594e gives AS/400 users the ability to move IP traffic from IP-based devices across the corporate WAN, eliminating the need for routers at remote sites. The Perle 594e is the only solution that offers Virtual Private Networking (VPN) support to give users the ability to securely connect AS/400 branch offices over the Internet using IPsec (IP Security). IPsec is supported by all major networking providers as today's industry standard for creating VPNs.



Comprehensive Management

Perle's PC Utility program makes it easy to manage all the Perle 594 Network Controllers in your network from any PC located on the network. Software upgrades can be easily distributed using this utility.

Class Leading Service and Support

The Perle 594e is backed by the best service and support in the industry including Perle's unique lifetime warranty.

Optional Feature Cards (up to a total of 6)

- 28-device Twinaxial
- 10/100 Mbps Fast Ethernet (2 max.)
- 8-device ASCII

Enhanced Networking Features

- Optional IP Routing software
- Optional VPN software

Host Interface

- V.35, EIA 232D (V.24/V.28), X.21, Ethernet

WAN Protocols

- SDLC, SNA Sub-area network, X.25, X.25 bis auto dial, X.21, Frame Relay, TCP/IP, PPP, IPSec, IKE
- PU Type 2.1 connection for AS/400 communication
- RU size up to 1,024 bytes

Dimensions

- 6.25" x 17.25" x 16.75" (H x W x D)
- 25 lbs.

Operating Temperature

- 50°F - 85°F

Humidity

- 20-80%, non-condensing

Operating Voltage

- 100-125VAC, 50-60Hz, 1.5A
- 200-240VAC, 50-60Hz, .75A

BTU Output

- 400/BTU hour max.

Memory

- 8 MB RAM max.

Front Panel

- 16 character backlit status display with 24-key keypad for system setup/status inquiry

Approvals

- FCC, UL listed, CSA, CE, DOC, TUV, BZT

Systems Supported

- All AS/400 and iSeries systems running OS/400 V2R1.1 or higher

Configuration Language Support

- English, French, Italian, German, Spanish, Japanese

Twinaxial Specifications

- Cable length - 1,235 m per port maximum

Workstations Supported

- All Twinaxial workstations, IBM PCs and compatibles supported by the IBM 5494
- IP over Twinax support

Sessions Supported

- With 6 Twinaxial feature cards, the Perle 594e supports up to 168 Twinax devices. Up to 1,120 logical Twinaxial sessions available through multi-session/multi-host feature.

Ethernet Specifications

Ethernet LAN wiring supported:

- 10 BaseT unshielded twisted pair
- 100 BaseTX Cat.5-unshielded twisted pair

LAN Speed

- 10/100 Mbps

ASCII Specifications

- Eight EIA-232D (V.24/V.28) ports with a fan-out cable

Speed

- Asynchronous up to 115.2 Kbps

Warranty

- Limited lifetime warranty

Maintenance Agreement

- To ensure rapid system recovery, maintenance agreements are available for Perle hardware. These include on-site service in many areas, or express part replacement. Visit Perle's Web site for coverage details.

www.perle.com/support/service_sales.html

Free Software

- Perle provides free software upgrades to registered users via Perle's Web site.

www.perle.com/downloads

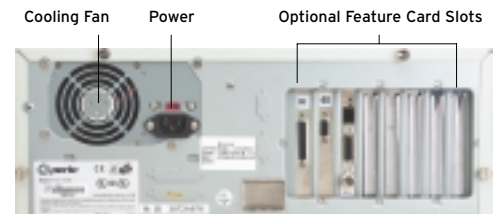
Visit the Perle Web site for up-to-date product support and technical information.

www.perle.com/products

Ordering Information

For Product Codes and Model Descriptions, please visit Perle's Web site at www.perle.com/products and select Product Family AS/400 Connectivity

Perle 594e Network Controller



Perle Authorized Distributor



Perle Systems Inc.
565 Marriott Drive, Suite 850
Nashville, TN 37214
www.perle.com

Contact Perle
Tel. 800 GO PERLE
Fax 615 872 0771
info@perle.com

Perle products are constantly reviewed and updated to meet customers' needs, as such specifications and capabilities are subject to change without notice. We endeavor to keep product descriptions as current as possible; for the latest up-to-date information, please visit our web site at www.perle.com. Perle is a registered trademark of Perle Systems. All other product names are trademarks of their respective holders. Copyright©Perle.