



Multipurpose Network Serial/Access Server

Features & Benefits

- High performance serial server
- Flexible Remote Access Server
- Extremely easy to configure
- Comprehensive security features
- Free fixed port software (Trueport)
- Free Flash firmware upgrades
- Comprehensive management options
- Rack and desk mount options
- Lifetime warranty for security and peace of mind

Applications

- Connect EPOS devices over the LAN
- Access serial devices for manufacturing process control
- Provide remote access to users and customers
- Provide terminal/printer access within harsh environments
- Connect modem pools for dial-in/dial-out purposes
- Providing connectivity in remote branches

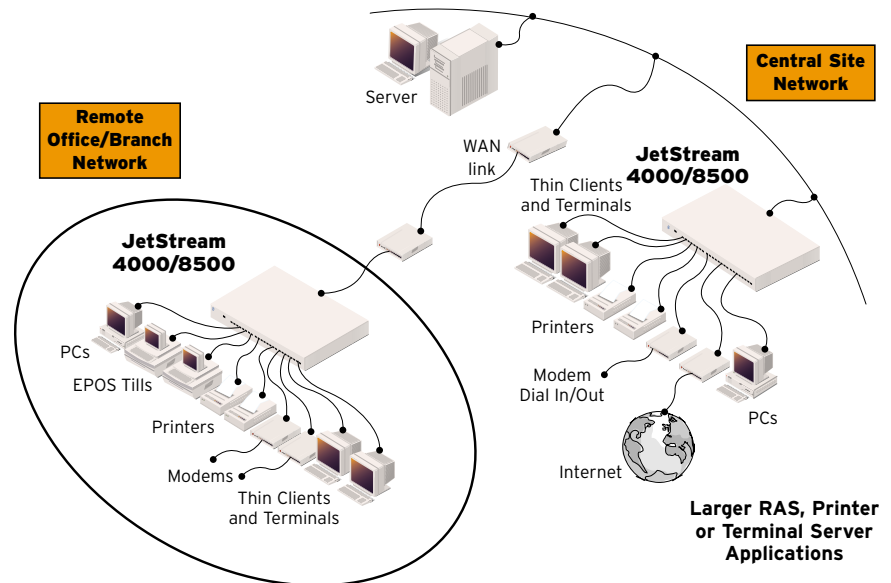
JetStream offers a cost effective and efficient way of communicating with serial devices over a LAN or WAN. JetStream provides 8, 16 or 24 serial ports that can access or be accessed by various systems across a network. This eliminates the need for multiple servers with serial port cards and reduces costly cabling.

Ease of Use

The JetStream is extremely easy to configure directly or via IP using Command Line, character based menus or a web browser.

Pseudo or Fixed Connections

The JetStream is capable of pseudo connections to servers via Telnet or Rlogin without additional software. However, where a server's application needs to access a fixed TTY or COM ports, Perle provides software called Trueport free with every unit. When using this application the JetStream ports appear as standard fixed serial ports.



Multiple Applications

The JetStream is an extremely flexible solution capable of supporting a number of different applications including:

- RAS – JetStream can perform as a remote access server using SLIP and PPP with security provided by PAP, CHAP, call-back and Radius support
- Printing – JetStream can act as a print server using RCP, LPD or Trueport software
- POS and Data Acquisition – JetStream connects various devices such as barcodes, scanners, weigh scales, tills, etc using Perle's Trueport software
- Traditional Terminal server – JetStream has all the features you would expect from a brand leader

Class Leading Support and Warranty

The Perle JetStream is backed by the best service and support in the industry including Perle's unique lifetime warranty.

Technical Specifications

Connectivity

Serial Ports

- JS8516 model: 16 RS232 serial ports
- JS8524 model: 24 RS232 serial ports
- JS8516/422 model: 16 RS422 serial ports
- JS4008 model: 8 RS232 serial ports + 1 parallel port

BackBone LAN Attachment

- 10BaseT RJ45 + AUI

Management Port

- RS232 DB25 Female (DB9 on the JS4008)

Physical

Architecture

- 32 bit processor
- Custom ASICs
- Up to 230 Kbps throughput per port

Serial Port Signals/Protection

- TXD, RXD, RTS, CTS, DTR, DSR, DCD and GND.
- All serial ports are ESD protected to 15kV through air.

LED Indicators

- Main – Power and Network
- Serial – Send and Receive integrated into each RJ45 connector

Power, Dimensions and Weight

- Internal, auto-ranging, 110-240v
JS8500 25W, JS4000 10W
- JS8500 (h) 1.77" (l) 9.01" (w) 16.93" (without ears)
- JS4000 (h) 1.8" (l) 9" (w) 9"
- JS8500 - 4.4 lbs JS4000 - 2.1 lbs

Environmental

- Operating Temperature: 32°F to 104°F
- Storage Temperature: -22°F to 158°F
- Operating Humidity: 5 to 95% RH (non-condensing)
- Storage Humidity: 5 to 95% RH (non-condensing)

Approvals

- EN55022 Class A, FCC A, CSA/NRTLc, IEC950, EN60950, CE, CTick

Software

Administration

Local or Remote management using:

- Command Line
- Menu Command Interfaces
- JETset Web-based configuration utility
- JETstart Web-based getting started utility
- Multi-Language Support: English, French, German, Italian, Spanish, Mandarin Chinese, and ability to load a custom language file

Network Protocols

- TCP/IP, UDP, ICMP, SNMP, ARP, Proxy ARP, RARP, DHCP, BOOTP, RIP and Static Routing, PPP, SLIP, CSLIP, TELNET, RLOGIN, CLEAR TCP, HTTP, WINS, DNS

Remote Access and Security

- Support for up to 20 different modem types initialisation strings
- RADIUS authentication (RFC2058)
- RADIUS accounting (RFC2059)
- PAP
- CHAP
- Fixed and Roaming Callback

Upgrades

FLASH update via:

- Network using BOOTP, DHCP or TFTP
- Local management port using Jetload

TruePort

Fixed TTY/Com port emulation software for:

- AIX
- SCO UnixWare
- SCO OpenServer
- NCR
- HP UX
- SUN Solaris
- Microsoft Windows NT

Warranty

- Limited lifetime warranty

Maintenance Agreement

- To ensure rapid system recovery, maintenance agreements are available for Perle hardware. These include on-site service in many areas, or express part replacement. Visit Perle's Web site for coverage details.

www.perle.com/support/service_sales.html

Free Software

- Perle provides free software upgrades to registered users via Perle's Web site.

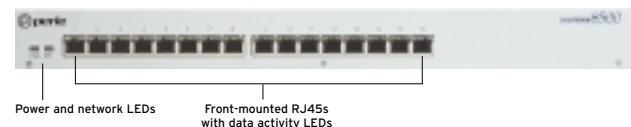
www.perle.com/downloads

Visit the Perle Web site for up-to-date support and availability information.

www.perle.com/products

Ordering Information

For Product Codes and Model Descriptions, please visit Perle's Web site at www.perle.com/products and select Product Family Serial Servers



Perle Authorized Distributor



Perle Systems Inc.
565 Marriott Drive, Suite 850
Nashville, TN 37214
www.perle.com

Contact Perle
Tel. 800 GO PERLE
Fax 615 872 0771
info@perle.com