

# 594M SERIES

## Perle Twinax Terminal Servers



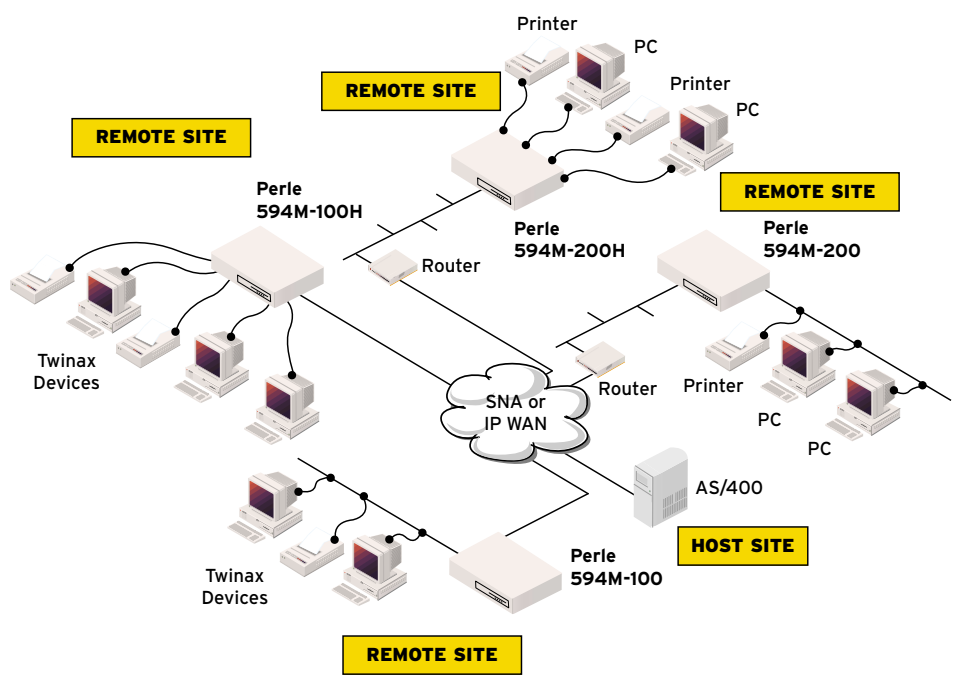
The Perle 594M Series of Twinax Terminal Servers is designed to connect small numbers of remote Twinax devices to AS/400 (iSeries) hosts across a SNA or TCP/IP network. Each model in the Perle 594M Series provides a simple, reliable and extremely cost-efficient solution for AS/400 branch office networking.

All Perle 594M Twinax Terminal Servers allow users to convert SNA-based 5250 data streams into IP packets. This allows for the efficient transport of SNA traffic from Twinax devices across the corporate WAN using IP, reducing network overhead and managements costs. And all 594M Twinax Terminal Servers can access economical, high speed Frame Relay Networks without the need for external routers and FRADs. This simplifies network structure at remote sites and reduces the number of potential failure points, which minimizes ongoing maintenance costs.

**The most cost-efficient and flexible solution for low density Twinax support at AS/400 branch offices**

**Features and Benefits:**

- Offers small branch offices the most economical solution for connecting up to 7 Twinax devices
- Provides a highly reliable, cost-effective solution for AS/400 users wanting an upgrade alternative to existing IBM 5394/5494 and Perle 394/494 installations
- Provides access to cost-effective Frame Relay Networks without the need for external routers or FRADs
- Compact unit with small footprint and no moving parts makes maintenance easy
- Supports AS/400 connections using SNA, SDLC, X.25, X.21, Ethernet, Frame Relay, TCP/IP over Frame Relay or TCP/IP over Ethernet
- 10/100 Mbps Fast Ethernet allows users to connect at 10 Mbps today and seamlessly migrate to 100Mbps, without additional cost or administrative problems
- Full support of the Euro currency symbol. Ideal alternative for upgrading existing 5394 controllers, which do not offer Euro currency symbol support
- Lifetime warranty for security and peace of mind



The Perle 594M-100 and 594M-100H offers SNA, SDLC, X.25, X.21, Frame Relay and even TCP/IP host connectivity options as standard.

For branch office sites utilizing Ethernet routers, the Perle 594M-200 and the Perle 594M-200H support both 10Mbps and 100Mbps Fast Ethernet connections.

To provide an inexpensive and flexible wiring solution for AS/400 branch office environments, the new Perle 594M Series also offers two models with integrated Twinax Hub functionality, one with synchronous host connection (Perle 594M-100H) and one with Fast Ethernet host connection (Perle 594M-200H).

**Class Leading service and Support**

The Perle 594M is backed by the best service and support in the industry including Perle's unique lifetime warranty. Couple this industry-leading support with the lowest total cost of ownership, and Perle 594M Twinax Terminal Servers become the most cost-effective solution available in AS/400 branch office connectivity.

## Technical Specifications

### Base Units

- Perle 594M-100 – Synchronous Host Connection with a Single Twinax Turret
- Perle 594M-100H – Synchronous Host Connection with an Integrated Twinax Hub
- Perle 594M-200 – Fast Ethernet Host Connection with Single Twinax Turret
- Perle 594M-200H – Fast Ethernet Host Connection with Twinax Hub

### Options

- Mounting brackets (wall or rack)
- 594M-100H/594M-200H 7 Twinax Baluns Pack

### Synchronous Interface

- V.35, EIA 232D (V.24/V.28), X.21

### Network Protocols

- SNA, SDLC, X.25, X.21 (circuit-switched), Ethernet, Frame Relay, TCP/IP over Frame Relay or TCP/IP over Ethernet
- Uses a PU Type 2.1 connection for AS/400 communication
- RU size up to 1,024 bytes

### Communications Speeds

- Up to 128 Kbps using V.35 (digital circuits) or X.21 host interface
- Up to 19.2 Kbps supported with synchronous modems and analog lines

### Memory

- Fixed 4 MB Flash RAM

### Dimensions

- 12" x 8" x 1.75"
- 3.2 lbs.

### Operating Temperature

- 50°F - 80°F

### Humidity

- 20 – 80%, non-condensing

### MTBF

- 100,000 hours (11.4 years)

### Operating Voltage

- 100 - 240 VAC, 50-60Hz, 0.7A

### Status LEDs

- Power Ready, Call Perle Service, SRC, Test Mode, Host Connectivity Twinaxial Status

### Approvals

- FCC, UL listed, CSA, CE, DOC, IEC, TUV, VCCI, AS/NZS

### Systems Supported

- All AS/400 and iSeries systems running OS/400 V2R1.1 or higher

### Software Support

- PC Support/400 V2R1.1 or higher
- Client Access/400; PC Support-compatible software, such as Rumba, Showcase VISTA, etc.

### Software Supplied

- 594M Controller Software
- 594M Controller Extended Diagnostic Software
- 594M Utility Programs for PCs (runs under Windows®95, 98, 2000 or NT)

### Configuration and Management

- Supports all 5494 Auto-configuration features
- PC Utility available in English, French, Italian, German, Spanish and Japanese
- Asynchronous interface port for direct communication with a local PC running PC Utility

### Interface

#### 594M-100/ 594M-200

- Single Twinaxial turret

### 594M-100H/594M-200H

- Seven RJ45 Twinax ports
- Seven Twinax Baluns

### Supported Workstations

- Supports up to 7 physical terminal and printers
- All Twinax workstations, IBM PCs and compatibles supported by the IBM 5494

### Compatibility

- Most baluns/patch panels are supported with maximum distances dependent on equipment used

### Ethernet Interface

- One RJ45 10BaseT/100BaseTX port

### Warranty

- Limited lifetime warranty

### Maintenance Agreement

- To ensure rapid system recovery, maintenance agreements are available for Perle hardware. These include on-site service in many areas, or express part replacement. Visit Perle's Web site for coverage details.  
[www.perle.com/support/service\\_sales.html](http://www.perle.com/support/service_sales.html)

### Free Software

- Perle provides free software upgrades to registered users via Perle's Web site  
[www.perle.com/downloads](http://www.perle.com/downloads)

Visit the Perle Web site for up-to-date product support and technical information.  
[www.perle.com/products](http://www.perle.com/products)

### Ordering Information

For Product Codes and Model Descriptions, please visit Perle's Web site at [www.perle.com/products](http://www.perle.com/products) and select Product Family AS/400 Connectivity

## Perle 594M-100



## Perle Authorized Distributor



**Perle Systems Inc.**  
565 Marriott Drive, Suite 850  
Nashville, TN 37214  
[www.perle.com](http://www.perle.com)

**Contact Perle**  
Tel. 800 GO PERLE  
Fax 615 872 0771  
[info@perle.com](mailto:info@perle.com)

Perle products are constantly reviewed and updated to meet customers' needs, as such specifications and capabilities are subject to change without notice. We endeavor to keep product descriptions as current as possible; for the latest up-to-date information, please visit our web site at [www.perle.com](http://www.perle.com). Perle is a registered trademark of Perle Systems. All other product names are trademarks of their respective holders. Copyright © Perle.