



High Performance Router With Dual LAN/WAN Capability For Branch Office Networking

Features and Benefits:

- Modular LAN and WAN interfaces offer flexible configuration to meet evolving network needs
- Virtual Private Network (VPN) capabilities for secure, low cost networking
- Compatibility with other vendors' products via industry standard protocols
- Stac LZS data compression increases data throughput up to 600%
- Permanent or dial up ISDN BRI connections
- Integrated security to protect LANs from unauthorised network access
- Auto-configuration to detect Frame Relay parameters for trouble-free connectivity
- Automatic switch-over ISDN backup provides disaster recovery for a leased line connection
- Lifetime warranty for security and peace of mind

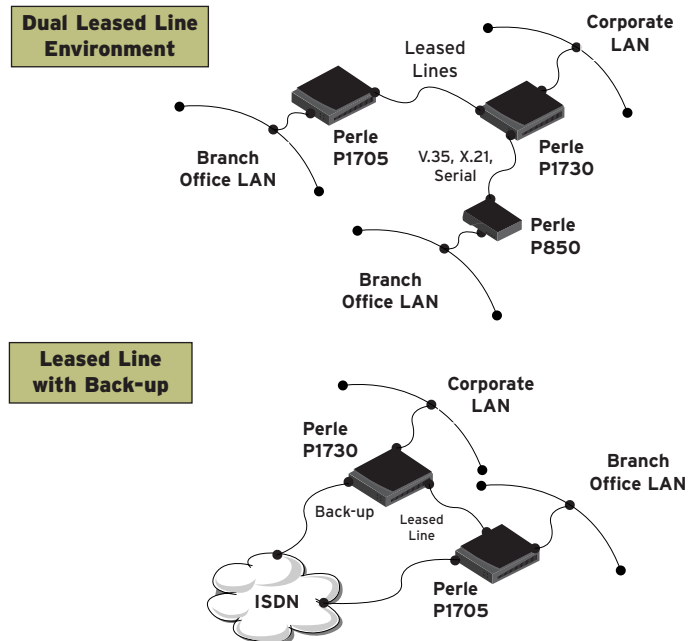
Applications

- Central, Branch Office access
- Remote office access to central offices
- Internet Access
- Connectivity to multiple offices

The Perle P1705 and P1730 access routers deliver a routing solution that is flexible, secure and integrates multiple network functions to respond to today's changing business needs. These routers offer the best cost of ownership in the industry for midmarket and small office networks.

Connectivity Options

The P1700 Series routers support up to two WAN and LAN interface cards for links to ISDN networks, serial data connections, 56/64K DDS services and high speed T1/E1 circuits, as well as multiple links to local area networks. P1700 installations frequently use a single high speed port for normal data connections, and install ISDN for the second port. If the primary connection fails, the P1700 router automatically restores critical network connectivity through the ISDN line and saves the cost of administrator intervention.



The P1705 is aimed at cost conscious 10Mbps networks that require full functional routing and included VPN.

The P1730 has all the features and functionality of the P1705 with the additional benefit of 10/100 Mbps LAN connection and optional VPN.

Security

Perle routers ensure data privacy with secure user authentication, firewalls, monitoring, configurable PPP security levels and other features. Optional VPN software ensures secured data gets to its intended audience and to no-one else.

Management

The Perle P1700 Series routers support administrator management from a range of platforms and applications. By utilising the Perle router configuration tools, such as the easy-to-use menuing system and the automatic self configuration of the Frame Relay and leased line interfaces, administrators can very quickly set up the routers at local and remote sites for immediate productivity.

Class Leading Service and Support

The Perle P1700 Series are backed by the best service and support in the industry including Perle's unique lifetime warranty.

Technical Specification

Routing Protocols

- IP, IPX
- RIP, RIP2
- SAP - Convert SAP learned services to static
- Static ARP, Proxy ARP
- ICMP

Bridging Protocols

- 802.3/Ethernet – Transparent MAC layer bridging
- 802.1D – STP

WAN Protocols

- PPP (PPP-ML)
- Frame Relay RFC 1490
- Frame Relay PPP

Other Protocols

- UDP, TCP, TFTP
- Bootstrap Protocol Relay Agent (BootP Relay, DHCP Relay)
- NAT, NAT, Reverse NAT
- DHCP
- BCP, CCP, BACP

Frame Relay Features

- Support for up to 128 DLCIs
- LMI Support for Annex A (ANSI), Annex D (ITU), LMI Type, and None
- Default Learning of LMI type
- Auto Learning of Frame Relay DLCIs

Security

- PAP, CHAP, NetSAFE Firewall
- VPN: IPSec, DES/3DES (optional on P1730)

ISDN Features

- ISDN PPP Digital Leased Circuit 128 Kbps
- 56Kbps Rate Adaptation (v.110)
- Bandwidth on Demand
- Protocol Spooling
- ISDN Call Management
- ISDN Diagnostics
- Backup - Mixed ISDN Services
- ISDN PPP Switched/Permanent Channels

ISDN Bandwidth Management

- Transparent link activation/deactivation on:
 - Time of day
 - IP and/or IPX destination address
 - LAN Traffic, automatic activation of 2nd link on mail link threshold

Network Management

- SNMP, MIB II, Bridge MIB, Telnet, Local RS-232 console port

Compression

- Stac LZS compression

Filter Rate

- 14,000 pps (nominal)

LAN Interface

- 10/100 Mbps Ethernet RJ45 (P1730)
- 10 Mbps Ethernet RJ45 (P1705)

WAN Interfaces

- Up to 4.096 Mbps (2 WAN interfaces combined)
- Automatic self configuration of leased line ports from default profiles

Telecoms Approval

- Europe : CE Telecom CTR3
- USA : FCC Part 68

Dimensions:

- 250 x 280 x 50 mm (W x D x H)

Weight:

- 4 Kg

Temperature:

- 2°C to 50°C

Humidity:

- 20% to 80% non-condensing

Power:

- 80-240 VAC 50-60Hz
20 watts maximum

Warranty

- Limited lifetime warranty

Maintenance Agreement

- To ensure rapid system recovery, maintenance agreements are available for Perle hardware. These include on-site service in many areas, or express part replacement. Visit Perle's Web site for coverage details. www.perle.com/support/service_sales.html

Free Software

- Perle provides free software upgrades to registered users via Perle's Web site. www.perle.com/downloads

Visit the Perle Web site for up-to-date product support and technical information.

www.perle.com/products

Ordering Information

For Product Codes and Model Descriptions, please visit Perle's web site at www.perle.com/products and select Product Family Routers

P1700 Series

Model	VPN
P1705	•
P1730	
P1730-V	•

Optional LAN Modules

Model	1705	1730
10BaseT (RJ45)	•	•
10Base2 (BNC)	•	
10Base5 (AUI)	•	

Optional WAN Modules

V.24	ISDN S/T
V.35	ISDN U
RS422/RS530	56/64K CSU/DSU
X.21	T1/E1 CSU/DSU
G.703	

Perle products available from:

**Perle Systems
Asia Pacific (Pte) Ltd.**
Singapore
Tel: +65 6749 1700

Perle Systems Limited
China
Tel: +86 10 6858 8136/8146
8259/8278

Perle Systems K.K.
Japan
Tel: +81 (0)3 3447 0833

Perle Systems Pty. Ltd.
Australia
Tel: +61 3 8802 0663

www.perle.com

Perle products are constantly reviewed and updated to meet customers' needs, as such specifications and capabilities are subject to change without notice. We endeavor to keep product descriptions as current as possible; for the latest up-to-date information, please visit our web site at www.perle.com. Perle is a registered trademark of Perle Systems. All other product names are trademarks of their respective holders. Copyright©Perle.