



## Windows® 5250 terminal emulation software for AS/400 dial-up

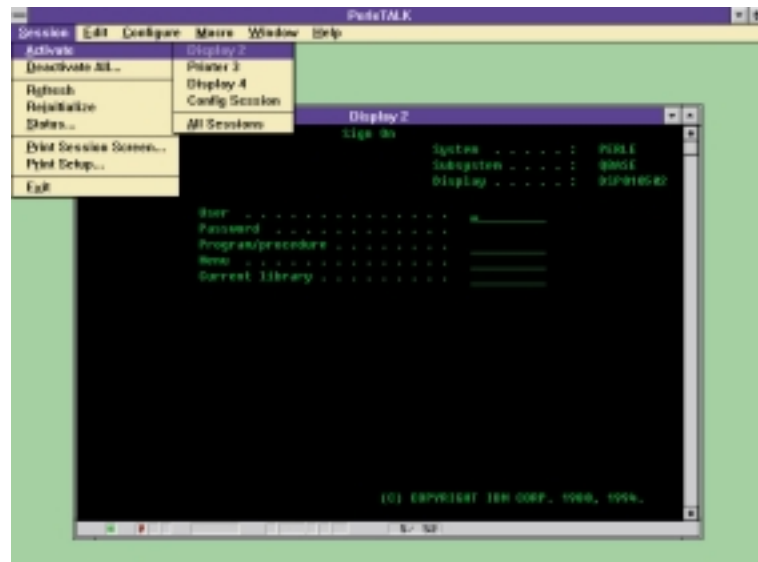
### Features and Benefits:

- Full 5250 terminal emulation for PCs running Microsoft Windows®
- Improved user productivity with multi-session support
- Easy-to-use auto-dial and phone directory
- Built-in support for PCMCIA and other popular modems
- 5250 printing with Windows® printer support
- Built-in macro facility for automated use
- Reduced keying with **Button Bar** and **customisable keyboard**

PerleTALK for Windows is a native 32 bit Windows® application providing 5250 terminal emulation for IBM PCs running Windows®3.1 or Windows®95/98.

When used with one of Perle's ASCII Servers (Model 3i, M3PC, 394E with ASCII feature card, 594e with ASCII feature card), PerleTALK for Windows provides users with convenient dial-up or direct-connect access to an IBM AS/400 (iSeries).

PerleTALK for Windows transforms your PC into an IBM 5250-compatible workstation with support for 5250 indicators and attributes. PerleTALK for Windows also configures your keyboard to emulate all 5250 commands.



PerleTALK for Windows offers many convenient, time-saving features to the user, along with the proven ease and consistency of the Windows® Graphical User Interface, allowing all operating functions and program parameters to be selected easily. PerleTALK for Windows also offers international language support; 5250 printer emulation; a built-in macro facility; and a conveniently-located button bar for quick, user configurable commands.

PerleTALK for Windows is designed with the traveller in mind. With auto-dial and multiple phone number features, users get fast and automated access to local and remote host systems with the click of a button.

PerleTALK for Windows includes a complete and detailed User's Guide. The Windows® Help facility also offers online information on the most important elements of PerleTALK for Windows.

Choose a winning combination: Perle's proven expertise in 5250 connectivity integrated into a native Windows® communications package.

## Technical Specifications

### PerleTALK for Windows features

- Support for multiple 5250 sessions
- Support for Perle 594e multi-host feature
- Support for all Microsoft Windows® printers
- 5250 printer emulation: IBM 3812-1, 4214-2, 5219-D1, 5224-2, 5225-4, 5256-3
- 3180-2 screen emulation (80- and 132- column mode)
- Customisable 5250 display attributes
- A graphical 5250 keyboard layout for easy keyboard customisation
- Customisable keyboard
- Printer and host icons change to reflect system status
- User-definable Button Bar
- Built-in record and playback macro facility
- Support for speeds up to 38.4 Kbps
- Built-in support for the most popular modems and for PCMCIA modems
- Support for COM 1, 2, 3, and 4
- Simplified connections using Smart Connect facility
- Auto-dial support
- Phone directory
- Windows® copy and paste support
- Auto-window sizing
- Auto-font sizing

## Application Specifications System Requirements

### CPU

- 80386 or better.

### Operating system

- DOS version 5.0 or higher, Windows® version 3.1 (running in Enhanced mode) or higher, or Windows®95/98.

### Hardware

At least four megabytes (MB) of RAM, one 3.5 1.44 MB floppy disk drive, at least four MB of free hard disk space, VGA display support or better, one available serial port, mouse.

### Printers

PerleTALK for Windows supports all printer supported by Microsoft Windows.

### Compatible Perle ASCII Servers

PerleTALK for Windows is supported by the Perle Model 3i (using version 2.20 or higher operating software), Perle M3PC, Perle 394E with ASCII feature card (using version 6.60 or higher operating software) and the Perle 594e with ASCII feature card.

### Host Connectivity

When connected through the appropriate Perle ASCII server, PerleTALK for Windows can access any IBM AS/400, iSeries or any System/3x.

## Available Versions

PerleTALK for Windows is available in English, French, German, Italian, and Spanish versions.

## International features

All versions of PerleTALK for Windows have full character set support for the following languages: Belgian, Canadian French, Danish, Dutch, Finnish, French, German, Greek, Italian, Norwegian, Spanish, Swedish, Turkish, UK English, and US English.

## Warranty

Perle Systems warrants the media to be in good working order for a period of one year from the date of purchase from Perle Systems. See the Limited Warranty statement in the User's Guide for full details. PerleTALK for Windows includes a set of 3.5 software diskettes and a comprehensive User's Guide.

Visit the Perle Web site for up-to-date product support and technical information.

[www.perle.com/products](http://www.perle.com/products)

## Ordering Information

For Product Codes and Model Descriptions, please visit Perle's Web site at [www.perle.com/products](http://www.perle.com/products) and select Product Family AS/400 Connectivity

## Perle Authorized Distributor



**Perle Systems Inc.**  
565 Marriott Drive, Suite 850  
Nashville, TN 37214  
[www.perle.com](http://www.perle.com)

**Contact Perle**  
**Tel. 800 GO PERLE**  
**Fax 615 872 0771**  
**info@perle.com**

Perle products are constantly reviewed and updated to meet customers' needs, as such specifications and capabilities are subject to change without notice. We endeavor to keep product descriptions as current as possible; for the latest up-to-date information, please visit our web site at [www.perle.com](http://www.perle.com). Perle is a registered trademark of Perle Systems. All other product names are trademarks of their respective holders. Copyright©Perle.